

Concord Middle School

CMSBC Meeting
February 15, 2024



Construction Update

Building C

- Concrete 100% complete
- Spray applied fireproofing 60% complete
- Exterior framing/sheathing 75% complete
- Air-Vapor Barrier 50% complete
- Exterior masonry commenced, 20% complete
- Interior framing ongoing, duct hangers progressing
- Electrical rough-in commenced in February
- Stairs in C1 in progress
- Roofing installation 40% complete
- Plumbing rough-in 50% complete

Building B

- Steel detailing ongoing
- Slab on deck 80% complete
- Duct hangers, plumbing rough-in in progress

Building A

- Steel detailing ongoing
- Underground plumbing ongoing



Construction Update

Site Work

- Ramp/cast-in-place wall 95% complete; backfill in progress
- South elevation segmental retaining wall 95% complete; backfill to be scheduled
- Installation of segmental retaining wall at north elevation in progress (adjacent to Bldg B/C)
- Sitework progress slow with winter temperatures

Other Highlights

- Transformer for temporary power installed by CMLP; currently powered by generator
- FF&E furniture being reviewed by CMS staff this week
- Building mock-up performance testing to occur the week of Feb 26



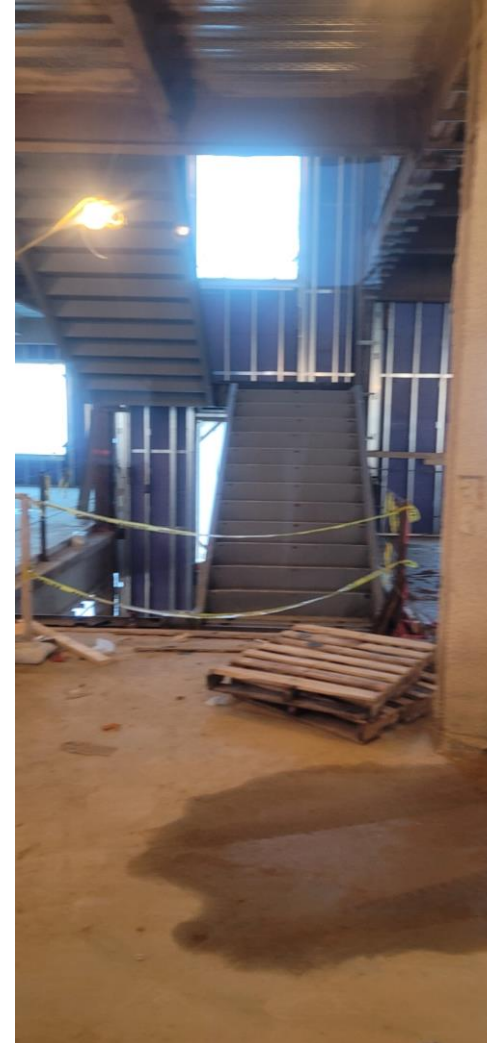
Site Photographs: Furniture Review



Site Photographs: Building C South Façade



Site Photographs: Building C Roofing & Stairs



Site Photographs: Drone Capture

January 23, 2024

