



Concord, MA

2022-23 Enrollment Projection Report

Copyright, New England School Development Council, 2023

Table of Contents

Section	Page
Enrollment Summary.....	1
Historical Enrollment Table.....	2
Historical Enrollment Graph.....	3
Projected Enrollment Table.....	4
Projected Enrollment Graph.....	5
Historical & Projected Enrollment Graph.....	6
Historical & Projected Enrollment in Grade Combinations Line Graph.....	7
Historical & Projected Enrollment in Grade Combinations Stacked Column Graph.....	8
Birth to Kindergarten Relationship Graph.....	9
Additional Information	10
New England's PK-12 Enrollment Trends.....	11
Reliability and Use of this Document	12

Enrollment Summary

The global pandemic continues to influence our nation's public health and economic stability in unpredictable ways. As such, it is still too early to identify many of the factors that could impact school enrollments. Over the past school year, we have seen fluctuations in the real estate market and job trends, which have impacted student attendance patterns. Moreover, during the past school year, we have seen how school enrollment patterns can differ substantially from one district to another, with some districts losing students while others experience an influx of students.

We are pleased to send you this report displaying the past, present, and projected enrollments for the District. These ten-year projections are designed to provide the District with yearly, up-to-date enrollment information that can be used by boards and administrators for effective planning and allocation of resources. Included in this report are graphs representing historical and projected grade-by-grade enrollments, as well as historical and projected enrollments in grade combinations. We have received the figures given to us by the District, and we assume that the method of collecting the enrollment data has been consistent from year to year.

Enrollment projections are more reliable in Years #1-4 in the future and less reliable in the "out-years." Projections six to ten years out may serve as a guide to future enrollments and are useful for planning purposes. In light of this, NESDEC has added a "Second Semester Refresher" enrollment projection at no cost to affiliates. (For more information please refer to the Reliability and Use of This Document section)

The NESDEC enrollment projection fell within 44 students of the K-8 total, 1,935 students projected vs. 1,891 enrolled.

Births increased by 5 from a previous ten-year average of 109 to a projected average of 114. Of note, there were 89 births in 2018, down from a range of 100-119 for the previous five years. This has an impact on elementary enrollments over the next five years.

Over the next three years, K-5 enrollments are projected to decrease by 76 students, and Grades 6-8 are projected to increase by 7 students, as students move through the grades.

Historical Enrollment

School District: Concord, MA

1/19/2023

Historical Enrollment By Grade																			
Birth Year	Births*	School Year	PK	K	1	2	3	4	5	6	7	8	9	10	11	12	UNGR	K-8	PK-8
2007	94	2012-13	40	226	215	256	245	243	217	243	234	221	0	0	0	0	0	2100	2140
2008	103	2013-14	26	233	235	235	267	247	246	212	235	242	0	0	0	0	0	2152	2178
2009	126	2014-15	22	198	234	241	241	250	237	240	210	241	0	0	0	0	0	2092	2114
2010	109	2015-16	28	225	207	240	237	238	246	239	232	208	0	0	0	0	0	2072	2100
2011	101	2016-17	28	209	237	216	245	234	232	239	249	227	0	0	0	0	0	2088	2116
2012	106	2017-18	25	220	205	241	223	233	242	229	248	247	0	0	0	0	0	2088	2113
2013	128	2018-19	25	208	234	207	242	213	234	246	235	255	0	0	0	0	0	2074	2099
2014	100	2019-20	25	209	218	237	213	238	215	241	239	237	0	0	0	0	0	2047	2072
2015	107	2020-21	39	175	218	219	229	209	233	216	230	238	0	0	0	0	0	1967	2006
2016	119	2021-22	58	182	193	220	232	227	206	235	217	236	0	0	0	0	0	1948	2006
2017	111	2022-23	54	186	191	201	217	225	220	214	226	211	0	0	0	0	0	1891	1945

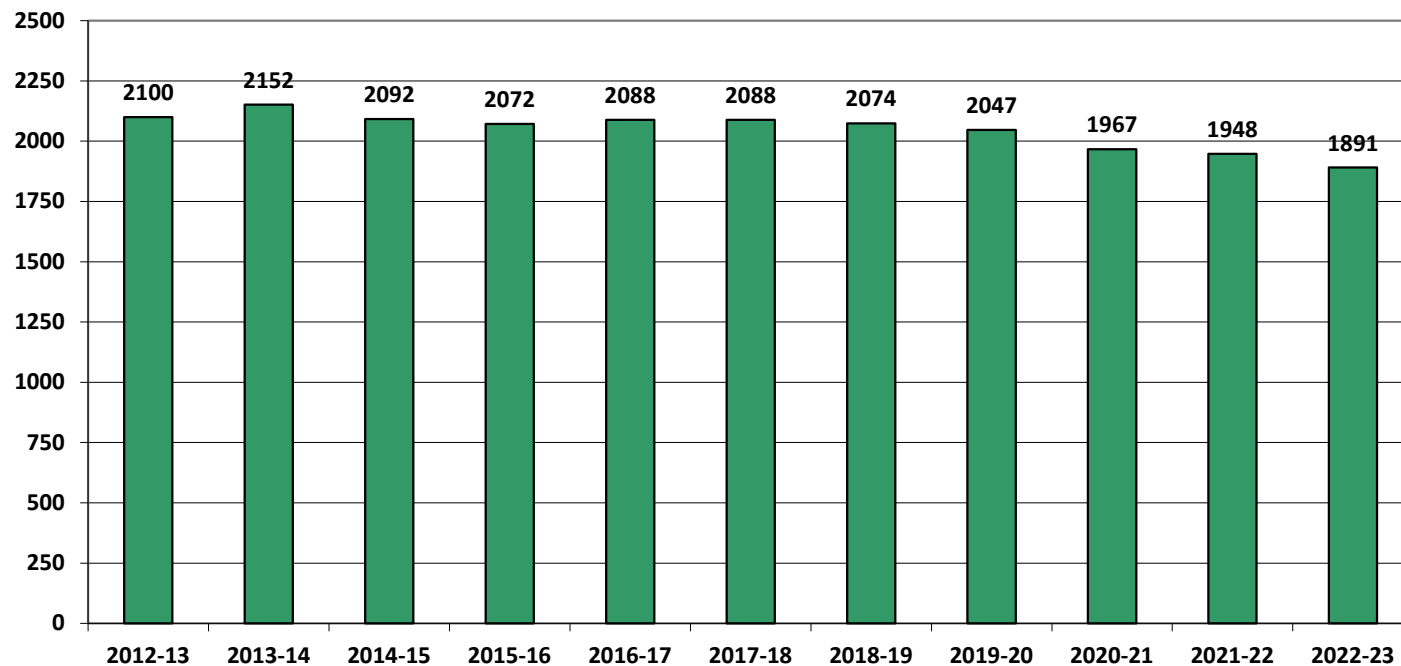
*Birth data provided by Public Health Vital Records Departments in each state.

Historical Enrollment in Grade Combinations									
Year	PK-5	K-5	PK-2	K-2	3-5	6-8	PK-8	K-8	
2012-13	1442	1402	737	697	705	698	2140	2100	
2013-14	1489	1463	729	703	760	689	2178	2152	
2014-15	1423	1401	695	673	728	691	2114	2092	
2015-16	1421	1393	700	672	721	679	2100	2072	
2016-17	1401	1373	690	662	711	715	2116	2088	
2017-18	1389	1364	691	666	698	724	2113	2088	
2018-19	1363	1338	674	649	689	736	2099	2074	
2019-20	1355	1330	689	664	666	717	2072	2047	
2020-21	1322	1283	651	612	671	684	2006	1967	
2021-22	1318	1260	653	595	665	688	2006	1948	
2022-23	1294	1240	632	578	662	651	1945	1891	

Historical Percentage Changes			
Year	K-8	Diff.	%
2012-13	2100	0	0.0%
2013-14	2152	52	2.5%
2014-15	2092	-60	-2.8%
2015-16	2072	-20	-1.0%
2016-17	2088	16	0.8%
2017-18	2088	0	0.0%
2018-19	2074	-14	-0.7%
2019-20	2047	-27	-1.3%
2020-21	1967	-80	-3.9%
2021-22	1948	-19	-1.0%
2022-23	1891	-57	-2.9%
Change		-209	-10.0%

Historical Enrollment

K-8, School Years 2012-13 to 2022-23



©New England School Development Council • 508-481-9444 • www.nesdec.org

Projected Enrollment

School District: Concord, MA

1/19/2023

Enrollment Projections By Grade*																				
Birth Year	Births*		School Year	PK	K	1	2	3	4	5	6	7	8	9	10	11	12	UNGR	K-8	PK-8
2017	111		2022-23	54	186	191	201	217	225	220	214	226	211	0	0	0	0	0	1891	1945
2018	89		2023-24	54	158	198	195	204	213	223	224	211	226	0	0	0	0	0	1852	1906
2019	116		2024-25	54	206	168	202	198	200	211	227	220	211	0	0	0	0	0	1843	1897
2020	100		2025-26	54	177	219	171	205	194	198	215	223	220	0	0	0	0	0	1822	1876
2021	147	(prov.)	2026-27	55	260	189	223	173	201	192	201	211	223	0	0	0	0	0	1873	1928
2022	113	(est.)	2027-28	55	200	277	192	226	170	199	195	198	211	0	0	0	0	0	1868	1923
2023	113	(est.)	2028-29	55	200	213	282	195	222	169	202	192	198	0	0	0	0	0	1873	1928
2024	118	(est.)	2029-30	56	209	213	217	286	191	220	172	199	192	0	0	0	0	0	1899	1955
2025	118	(est.)	2030-31	56	209	223	217	220	281	189	224	169	199	0	0	0	0	0	1931	1987
2026	122	(est.)	2031-32	56	216	223	227	220	216	279	192	220	169	0	0	0	0	0	1962	2018
2027	117	(est.)	2032-33	56	207	230	227	230	216	214	284	189	220	0	0	0	0	0	2017	2073

Note: Ungraded students (UNGR) often are high school students whose anticipated years of graduation are unknown, or students with special needs - UNGR not included in Grade Combinations for 7-12, 9-12, etc.

Based on an estimate of births

Based on children already born

Based on students already enrolled

*Birth data provided by Public Health Vital Records Departments in each state.

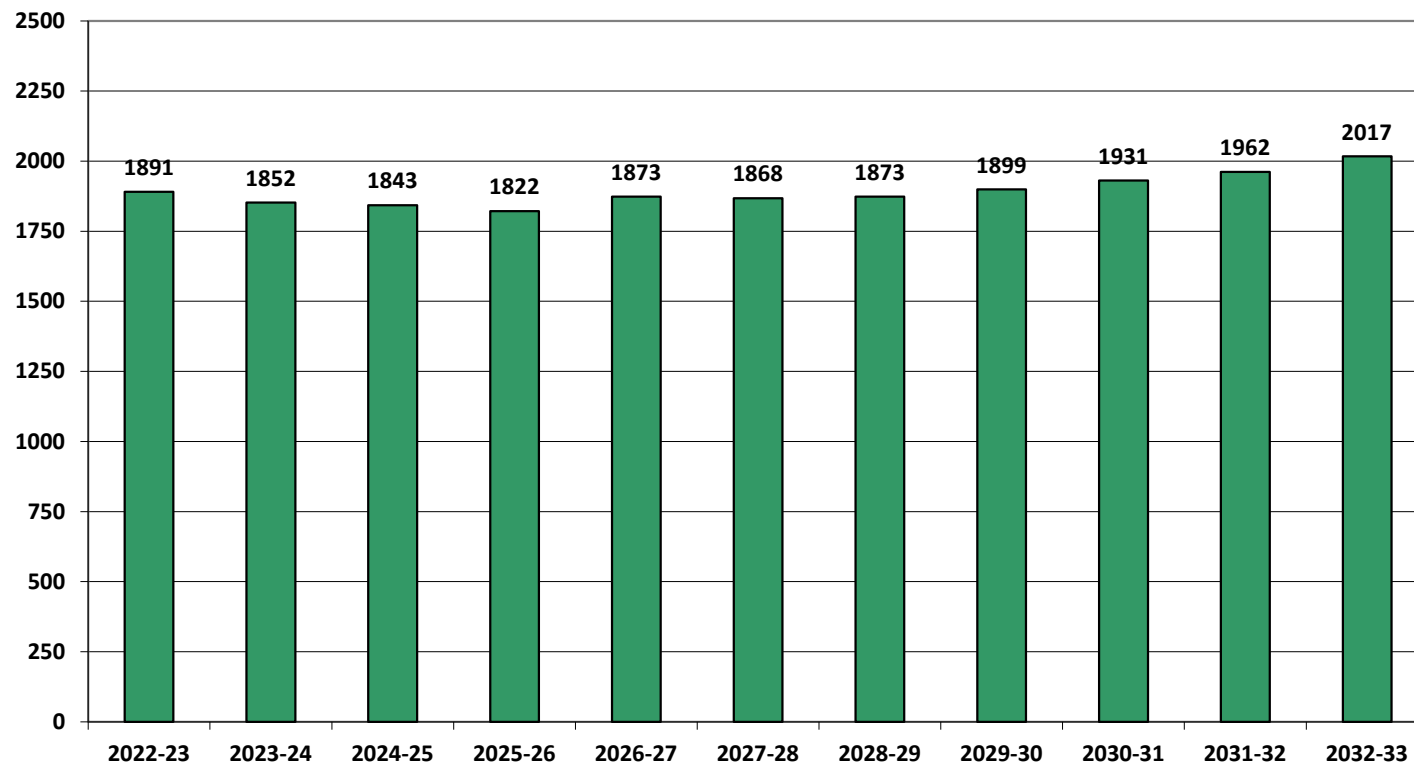
Projected Enrollment in Grade Combinations*									
Year	PK-5	K-5	PK-2	K-2	3-5	6-8	PK-8	K-8	
2022-23	1294	1240	632	578	662	651	1945	1891	
2023-24	1245	1191	605	551	640	661	1906	1852	
2024-25	1239	1185	630	576	609	658	1897	1843	
2025-26	1218	1164	621	567	597	658	1876	1822	
2026-27	1293	1238	727	672	566	635	1928	1873	
2027-28	1319	1264	724	669	595	604	1923	1868	
2028-29	1336	1281	750	695	586	592	1928	1873	
2029-30	1392	1336	695	639	697	563	1955	1899	
2030-31	1395	1339	705	649	690	592	1987	1931	
2031-32	1437	1381	722	666	715	581	2018	1962	
2032-33	1380	1324	720	664	660	693	2073	2017	

Projected Percentage Changes			
Year	K-8	Diff.	%
2022-23	1891	0	0.0%
2023-24	1852	-39	-2.1%
2024-25	1843	-9	-0.5%
2025-26	1822	-21	-1.1%
2026-27	1873	51	2.8%
2027-28	1868	-5	-0.3%
2028-29	1873	5	0.3%
2029-30	1899	26	1.4%
2030-31	1931	32	1.7%
2031-32	1962	31	1.6%
2032-33	2017	55	2.8%
Change		126	6.7%

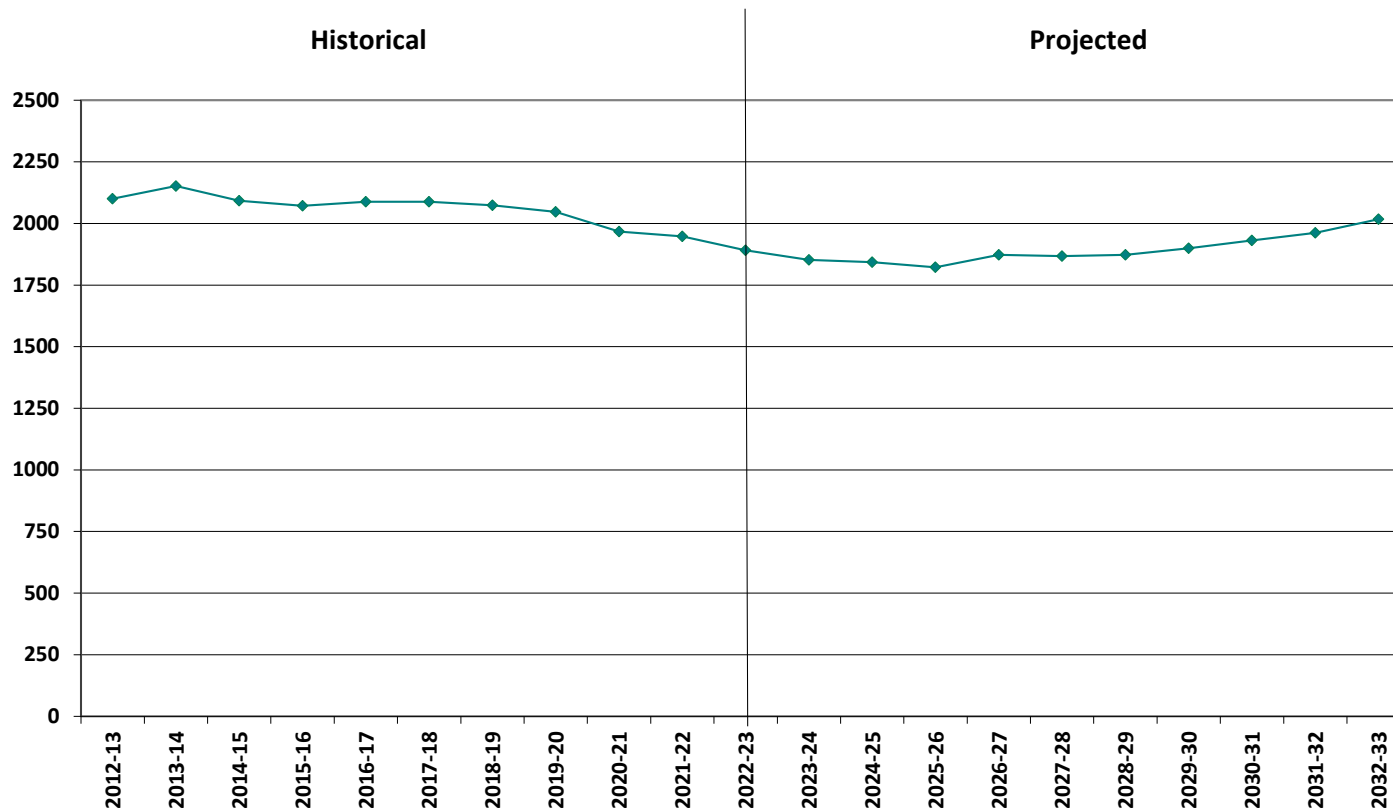
*Projections should be updated annually to reflect changes in in/out-migration of families, real estate sales, residential construction, births, and similar factors.

Projected Enrollment

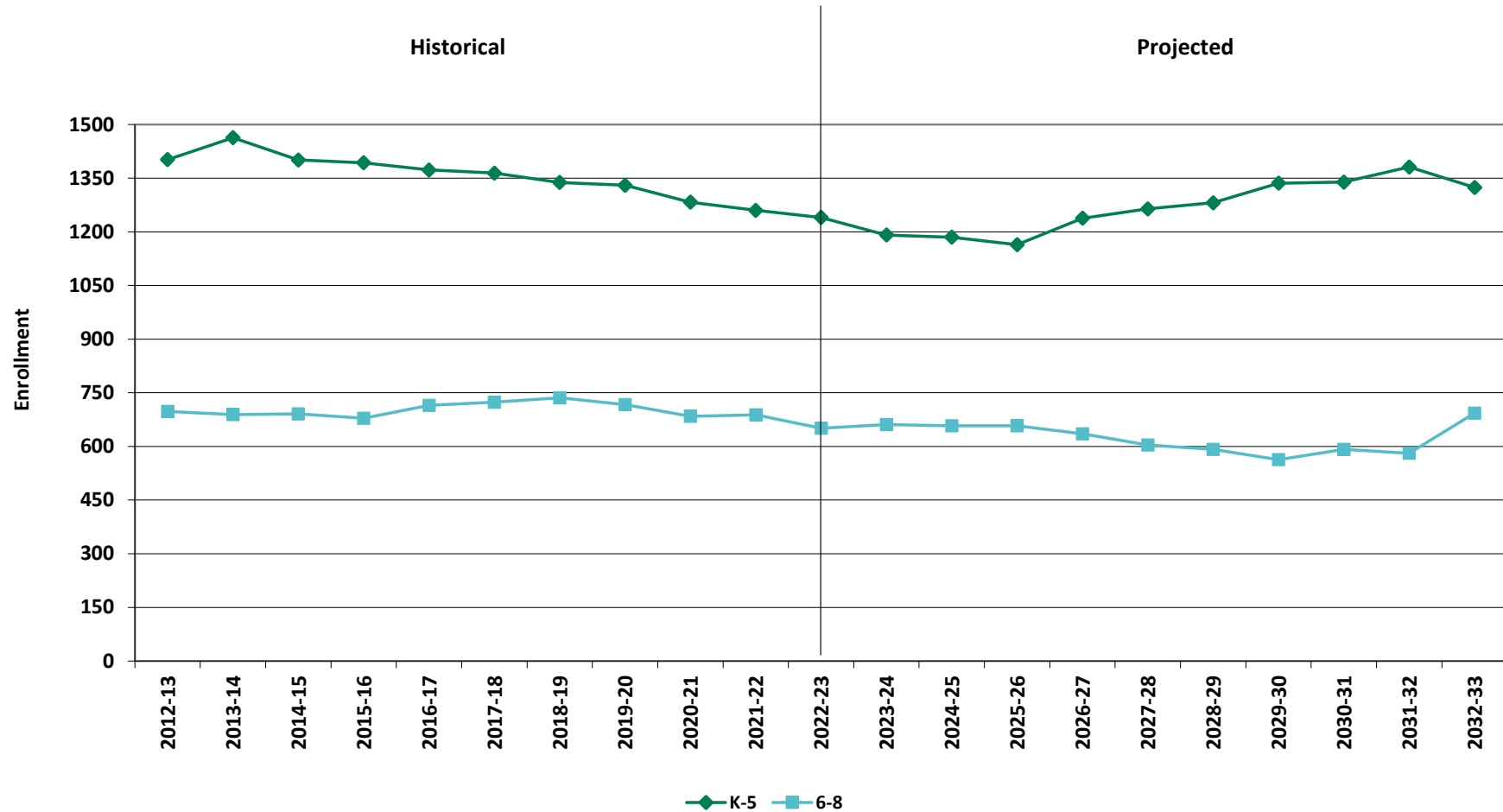
K-8, School Years 2022-23 to 2032-33



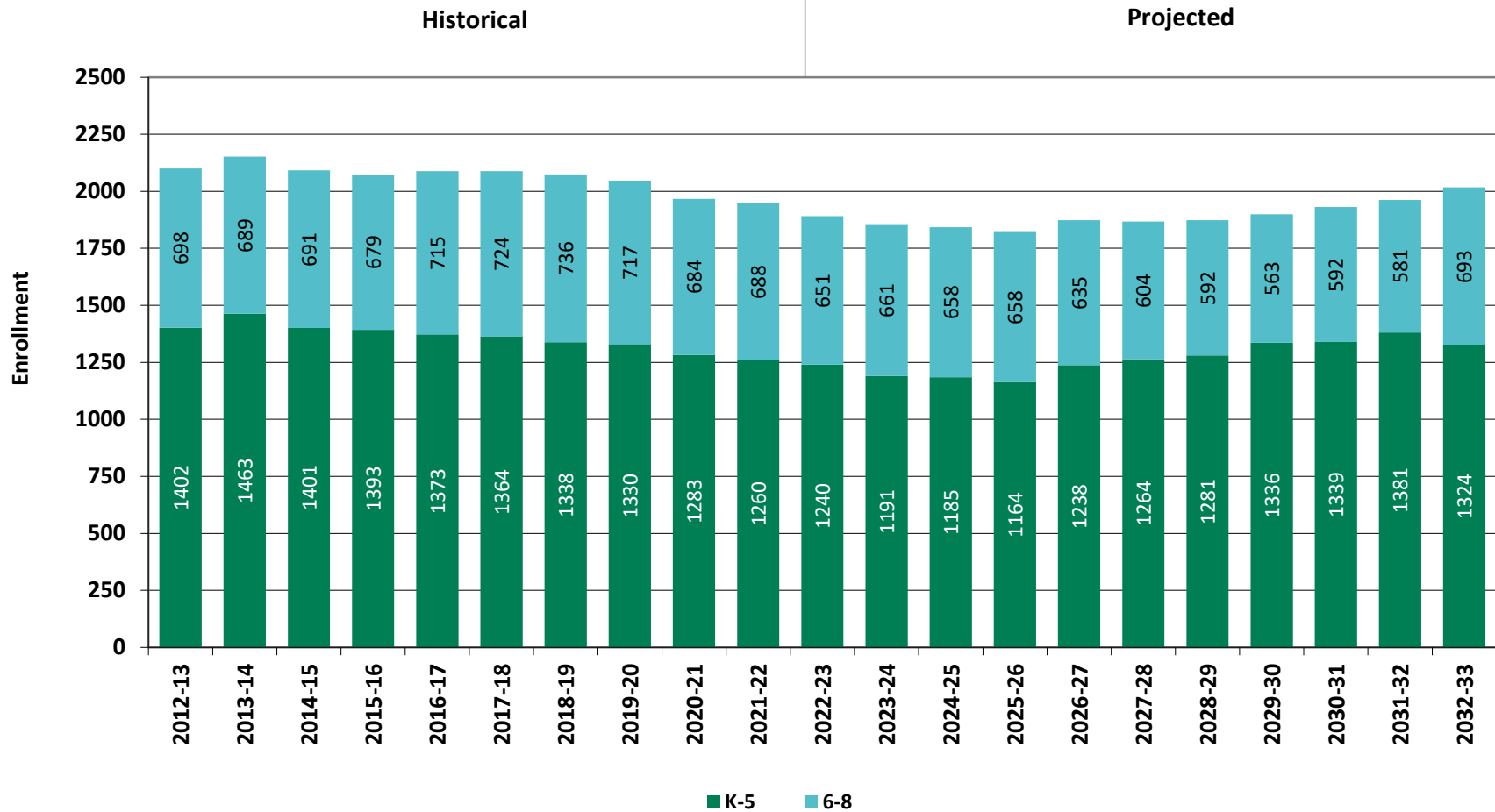
Historical & Projected Enrollment



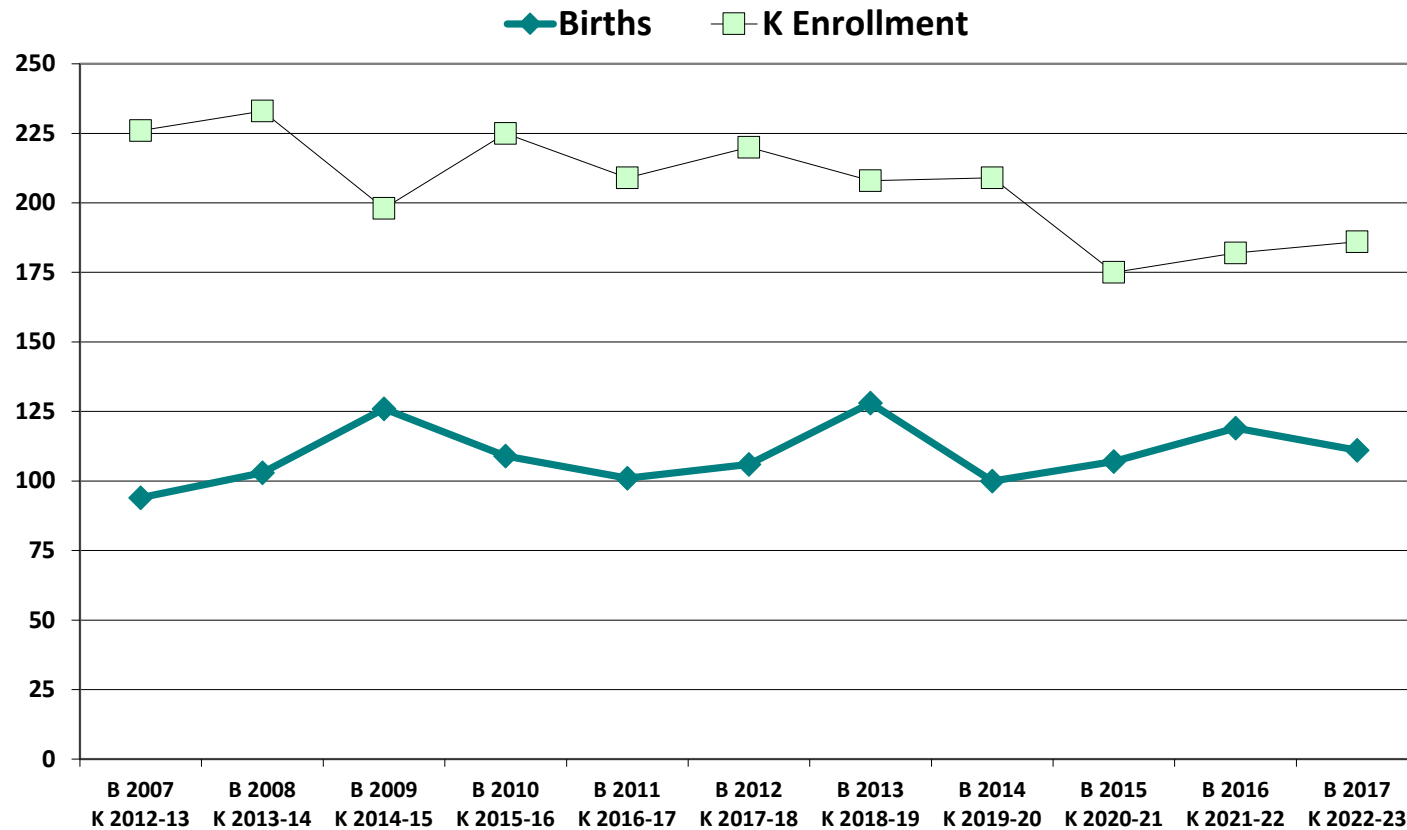
Historical & Projected Enrollments in Grade Combinations



Historical & Projected Enrollments in Grade Combinations



Birth-to-Kindergarten Relationship



Additional Information

Building Permits Issued (Source: HUD)		
Year	Single-Family	Multi-Units
2012	35	102
2018	50	0
2019	28	2
2020	27	0
2021	35	0
2022	29 to date	0 to date

Enrollment History*		
Year	Career-Tech 9-12 Total	Non-Public K-8 Total
2012-13	n/a	324
2018-19	n/a	n/a
2019-20	n/a	277
2020-21	n/a	194
2021-22	n/a	170
2022-23	n/a	183

Residents in Non-Public Independent and Parochial Schools (General Education)*														
Oct. 1 Enrollment	K	1	2	3	4	5	6	7	8	9	10	11	12	K-8 TOTAL
	13	< 10 **	< 10 **	14	10	25	29	35	40	0	0	0	0	183

K-8 Home-Schooled Students*	
2022	31

K-8 Residents in Charter or Magnet Schools, or Choiced-out*	
2022	< 10 **

K-8 Special Education Outplaced Students*	
2022	18

K-8 Tuitioned-In, Choiced-In, & Other Non-Residents*	
2022	27

*The above data were provided by the District, with the exception of building permit data (provided by HUD).

"n/a" signifies that information was not provided by District.

** < 10 Not reported, to protect subgroups with fewer than 10 students.

New England's PK-12 Enrollment Trends

From 2020 to 2030, the US Department of Education anticipates changes in PK-12 enrollment of -2.4% in the South, -6.5% in the West, -3.8% in the Midwest, -6.2% in the Northeast, and a total of -4.3% nationwide.

State	Fall 2020 PK - 12	Fall 2030 Projected	PK-12 Decline	% Change 2020-2030
CT	509,058	475,600	-33,458	-6.6%
ME	172,455	161,800	-10,655	-6.2%
MA	921,712	879,900	-41,812	-4.5%
NH	169,027	144,600	-24,427	-14.5%
RI	139,184	130,200	-8,984	-6.5%
VT	82,401	74,600	-7,801	-9.5%

Source: U.S. Department of Education, National Center for Education Statistics,
Enrollment In Public Schools fall 1990 to fall 2030, Table 203.20, March 2022.

Although most New England Districts are seeing a decline in the number of births, NESDEC's experience indicates that the impact on enrollment varies from District to District. Almost half of New England Districts have been growing in PK-12 enrollment, and a similar number are declining (often in rural areas), with the other Districts remaining stable.

Reliability and Use of this Document

PROJECTION METHODOLOGY

Cohort component (survival) technique is a frequently used method of preparing enrollment forecasts. NESDEC uses this method, but modifies it in order to move away from forecasts that are wholly computer- or formula-driven. Such modification permits the incorporation of important, current district-specific information into the generation of enrollment forecasts (such as in/out-migration of students, resident births, HUD-reported building permits, etc.). Percentages are calculated from the historical enrollment data to determine a reliable percentage of increase or decrease in enrollment between any two grades. For example, if 100 students enrolled in Grade 1 in 2018-19 increased to 104 students in Grade 2 in 2019-20, the percentage of survival would be 104%, or a ratio of 1.04. Ratios are calculated between each pair of grades or years in school over several recent years.

After study and analysis of the historical ratios, and based upon a reasonable set of assumptions regarding births, migration rates, retention rates, etc., ratios most indicative of future growth patterns are determined for each pair of grades. The ratios thus selected are applied to the present enrollment statistics to project into future years. The ratios are the key factors in the reliability of the projections, assuming validity of the data at the starting point.

RELIABILITY OF ENROLLMENT PROJECTIONS

Projections can serve as useful guides to school administrators for educational planning. Enrollment projections are more reliable in Years #1-4 in the future and less reliable in the "out-years." Projections six to ten years out may serve as a guide to future enrollments and are useful for planning purposes, but they should be viewed as subject to change given the likelihood of potential shifts in underlying assumptions/trends, such as student migration, births as they relate to Kindergarten enrollment, and other factors.

Projections that are based upon **the children who already are in the district** (the current K-12 population only) will be the most reliable. The second level of reliability will be for those children already **born into the community but not yet old enough to be in school**. The least reliable category is the group for which an estimate must be made **to predict the number of births**, thereby adding additional uncertainty. See these three multi-colored groupings on the "Projected Enrollment" tab.

Annual updates allow for early identification of recent changes in historical trends. When the actual enrollment in a grade is significantly different (higher or lower) from the projected number, it is important (yet difficult) to determine whether this is a one-year aberration or whether a new trend may have begun. **In light of this possibility, NESDEC urges all school districts to have updated enrollment forecasts developed by NESDEC each October.** This service is available at no cost to affiliated school districts.

USING THIS INFORMATION ELECTRONICALLY

If you would like to extract the information contained in this report for your own documents or presentations, you can use screenshots, which can be inserted into PowerPoint slides, Word documents, etc. Because screenshots create graphics, the image is not editable. Please feel free to contact us if you need assistance in this matter, by phone (508-481-9444) or by email (ep@nesdec.org).