



Town of Concord

Concord Middle School

Middle School Building Committee

Design Development

24 March 2022

Agenda

Value Management Initiative 26 – Remove 934 gsf from building

Updated Floor Plans

Value Management Initiative 18B – Replace brick type 3 (dark) with 4x4x16 ground face CMU in all locations

Value Management Initiative 20 – Replace all brick type 1 (light / white) with 4x4x16 ground face CMU

Value Management Initiative 27 – Reduce height of glass in connector

In-progress massing, material selections and glazing adjustments.

Design Development & Kick-off Tasks

Educational Programming

- Meetings held with Laurie and Justin and staff conducted 03.22 & 03.23

Traffic Study

- Counts complete, Study expected in 2-3 weeks.

Geotechnical Investigations

- Conducted March 21-24
- Will need to return for sod repair in spring

Geo-environmental

- Reviewing options

Hydrant Flow

- Flow Test conducted Monday, March 14th
- Based upon the results the fire pump is required

Value Management Log x OPEN Items

During the next phase of the project the Design team has committed to advancing four VM items:

Soils:

- Updated plans for stockpile locations to be reviewed with the School after we receive initial results from the Geotech investigations.

Roof Screen:

- Acentech determined that either HVAC attenuation or roof screens will be required. SMMA is reviewing the HVAC recommendations and is prioritizing those methods. Although they also have a cost which can be offset from the screens.

Ventilation:

- Design is ongoing with the goals in mind.

Fire Pump:

- Hydrant flow test complete. x A fire pump is required.

Value Management Log x Design Items

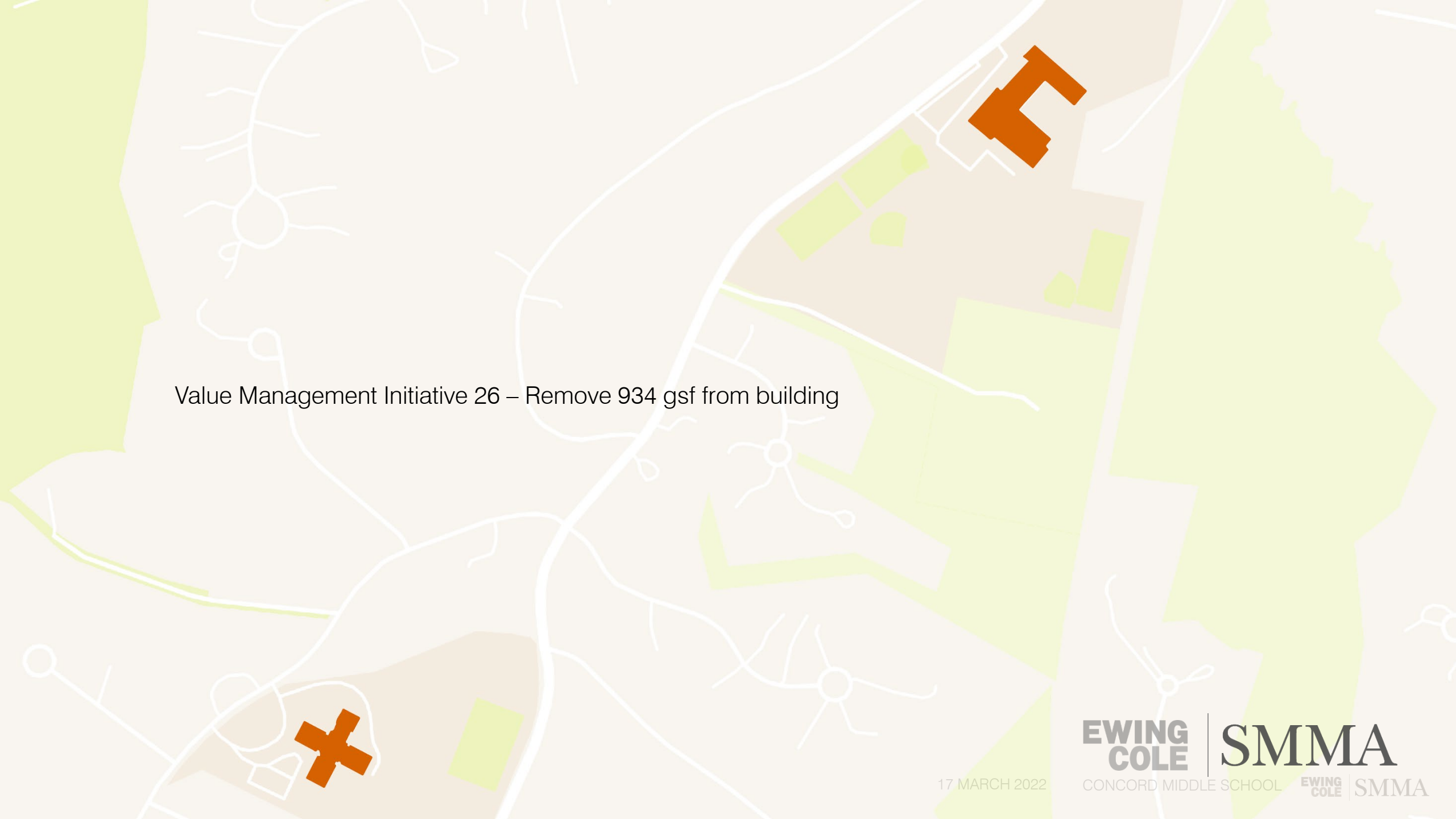
Design advancement of 4 VM accepted items:

Value Management Initiative 26 – Remove 934 gsf from building

Value Management Initiative 18B – Replace brick type 3 (dark) with 4x4x16 ground face CMU in all locations

Value Management Initiative 20 – Replace all brick type 1 (light / white) with 4x4x16 ground face CMU

Value Management Initiative 27 – Reduce height of glass in connector



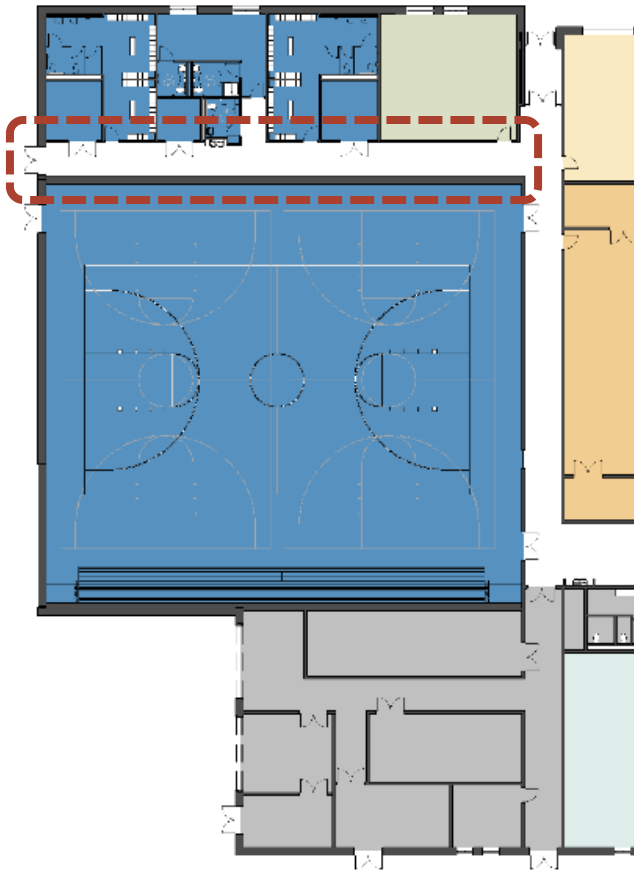
Value Management Initiative 26 – Remove 934 gsf from building

17 MARCH 2022

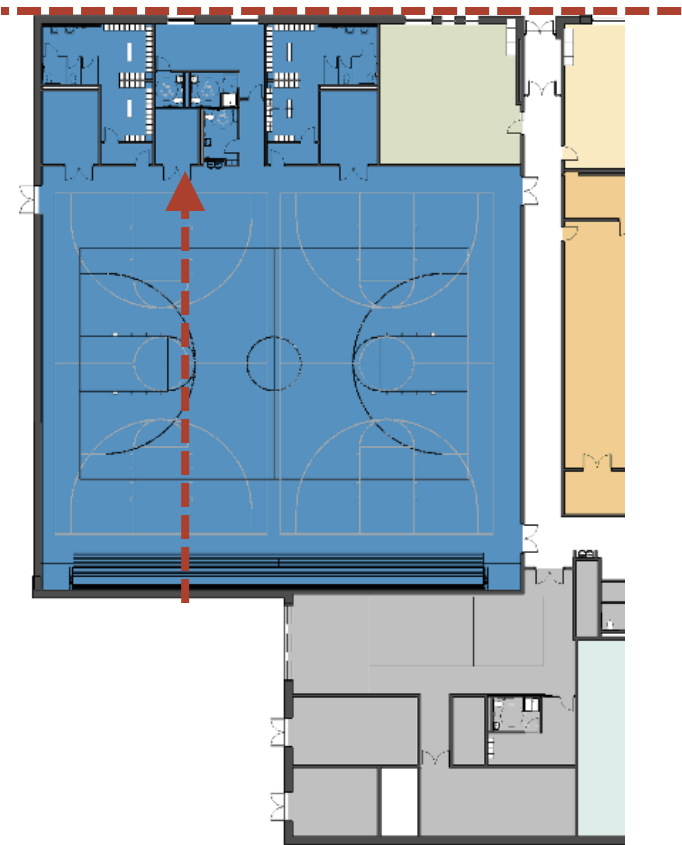
SD GROSS SQAURE FOOTAGE: 143,510 GSF

SD VALUE MANAGEMENT: -934 SF

DD GROSS SQUARE FOOTAGE: 142,576 GSF



SCHEMATIC DESIGN FLOOR PLAN



CURRENT FLOOR PLAN

- Classroom
- Team Commons
- Special Education
- Vocation/Tech Classroom
- Administration
- Guidance
- Nurse
- Media Center
- Auditorium
- Music
- Art
- Physical Education
- Cafeteria



UPPER LEVEL FLOOR PLAN

17 MARCH 2022

CONCORD MIDDLE SCHOOL

EWING
COLE

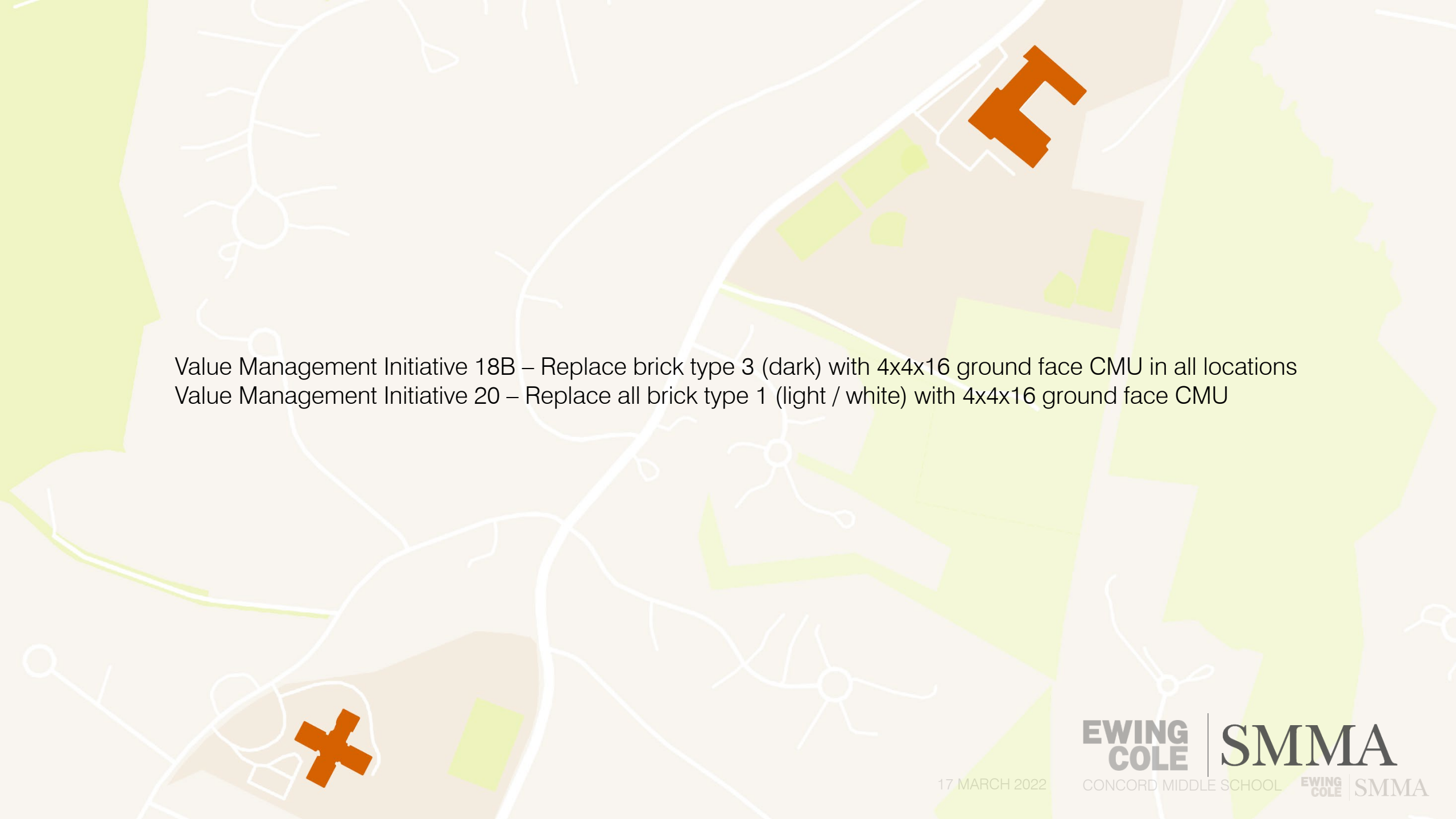
SMMA



- Classroom
- Team Commons
- Special Education
- Vocation/Tech Classroom
- Administration
- Guidance
- Nurse
- Media Center
- Auditorium
- Music
- Art
- Physical Education
- Cafeteria



LOWER LEVEL FLOOR PLAN



Value Management Initiative 18B – Replace brick type 3 (dark) with 4x4x16 ground face CMU in all locations
Value Management Initiative 20 – Replace all brick type 1 (light / white) with 4x4x16 ground face CMU

17 MARCH 2022

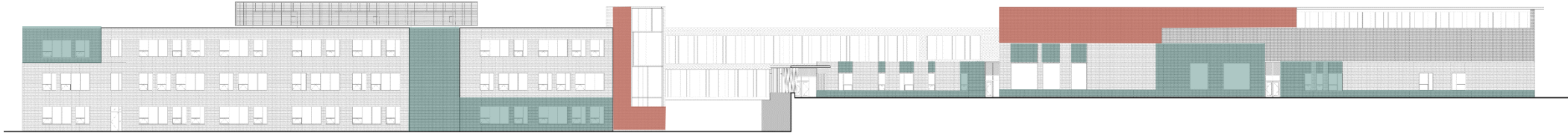
**EWING
COLE**

CONCORD MIDDLE SCHOOL

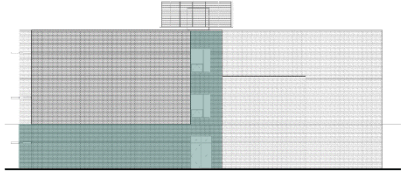
SMMA

**EWING
COLE** | **SMMA**

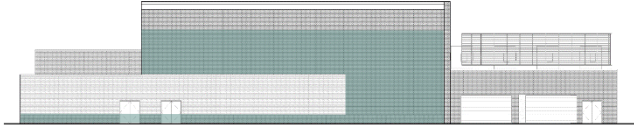
Dark Brick
Light Brick



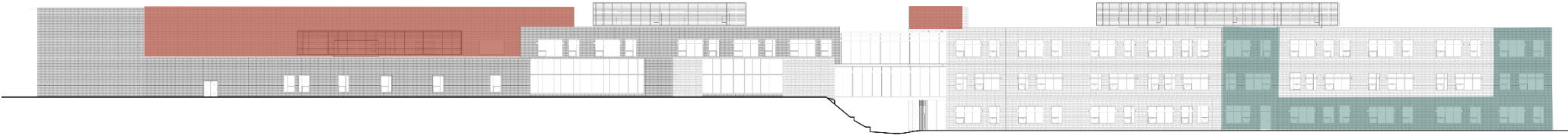
NORTH ELEVATION



WEST ELEVATION



EAST ELEVATION



SOUTH ELEVATION







GRAIN BRICK



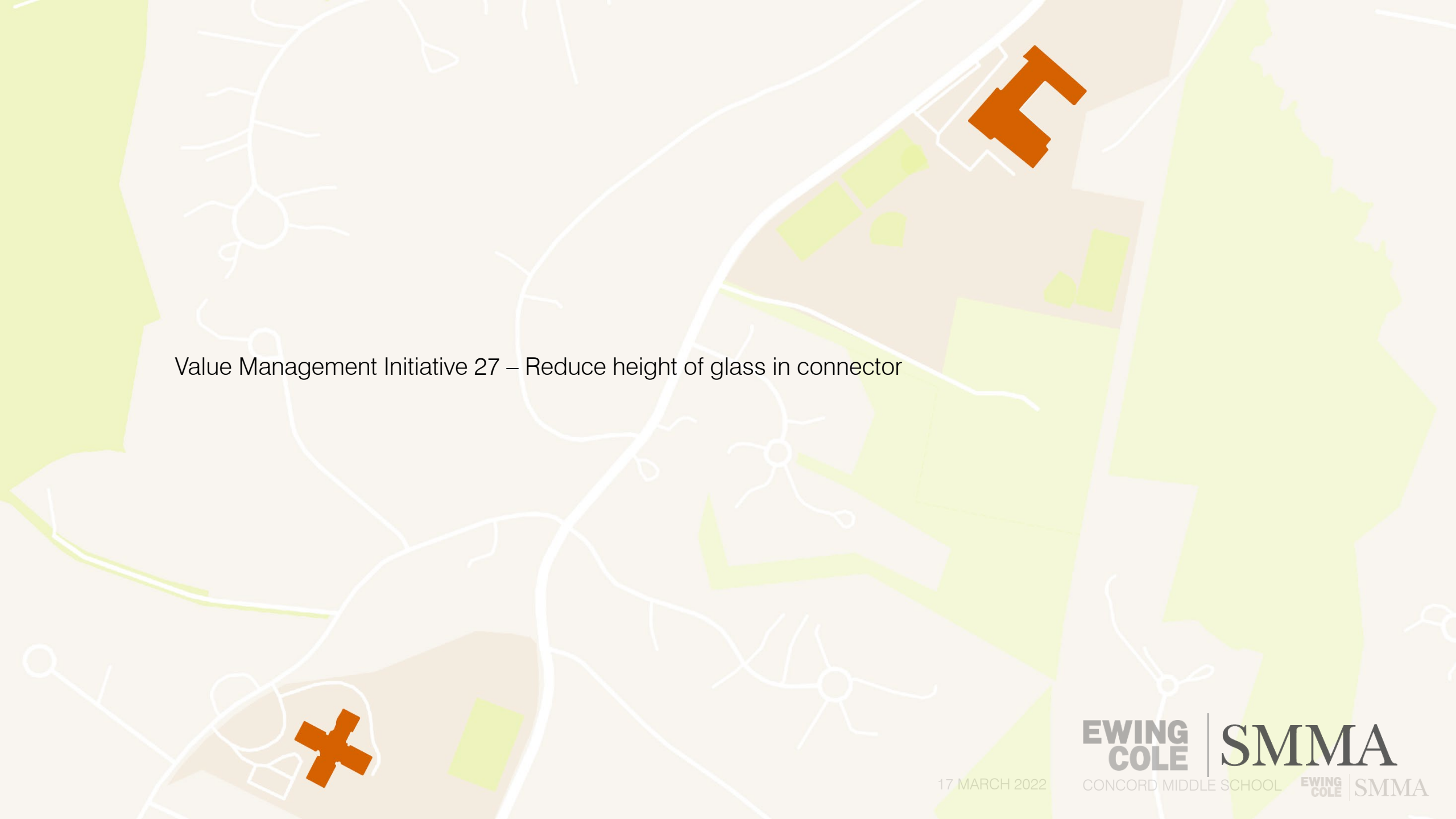
PHENOLIC WOOD



CONCRETE MASONRY

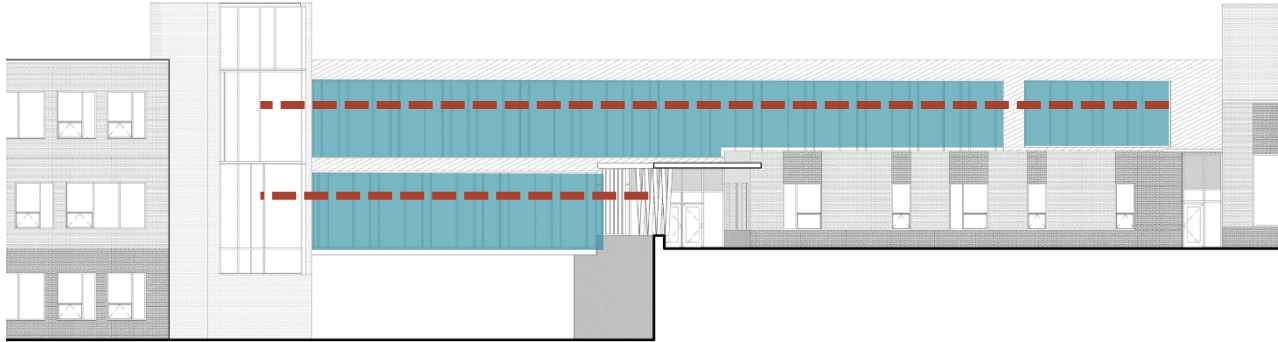


MATERIAL PALETTE OPTIONS



Value Management Initiative 27 – Reduce height of glass in connector

17 MARCH 2022



SD VALUE MANAGEMENT REDUCTION: -1,006 SF

Assumed as reducing glazing head to 8'-0" from 12'-0"

CURRENT CONFIGURATION:

-1,006 SF

Proposed reconfiguration meets target reduction but differs in approach:

Reduces Upper Level glazing head to 10'-0" (ceiling height), Raises Ground Level sill height to 18 inches, and introduces more opaque area.





Perspective Views

17 MARCH 2022















Next Steps

Design Sub-Committee DD Meeting #2

Thursday, April 14

Design advancement of Classrooms, Team Commons, Auditorium, Cafeteria,
Gymnasium

Site and Landscape Update

Building Committee Meeting #3

Thursday, April 28

Design advancement of Classrooms, Team Commons, Auditorium, Cafeteria,
Gymnasium

Site and Landscape Update

MEPFP Design Update



Questions/Comments?

17 MARCH 2022

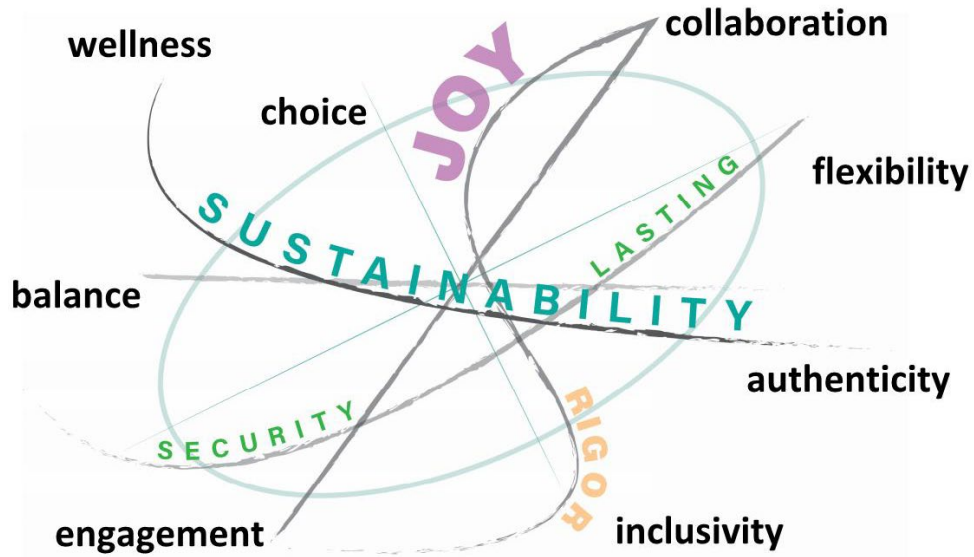
**EWING
COLE**

CONCORD MIDDLE SCHOOL

SMMA

**EWING
COLE** | **SMMA**

Vision: Eight Core Principles



Vision : Specifics



Collaboration

furniture and spaces designed for the full range of experiences and modes to prepare students to be effective adults

Flexibility

- various room sizes with ability to combine or divide spaces to support all teaching modes and learning styles
- planning ahead to facilitate future expansion and ease renovation

Authenticity

- real and warm materials such as natural wood and fabrics
- connection to nature

Inclusivity

- barrier-free design
- zoning for after-hours and community use
- an auditorium and cafeteria that can hold the entire school
- effective and intuitive circulation for connection and good communication

Engagement

- spaces for hands-on innovation, creativity and joyful learning
- a green building that can be a teaching tool
- one special defining space or campus element

Balance

foster the full spectrum:

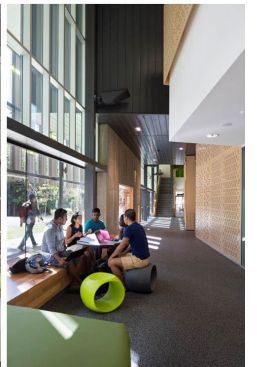
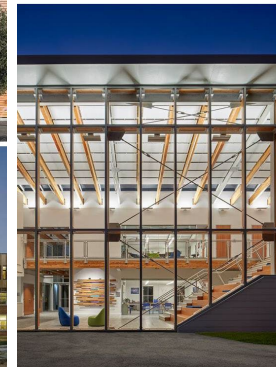
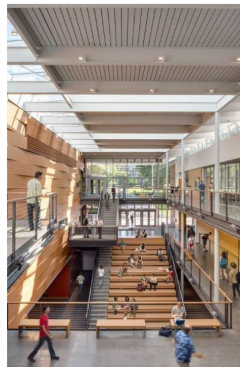
- technology to craft
- teacher-led to student-led
- indoors to outdoors
- independent to group

Wellness

- sustainable, high-performance school with care applied to comfort, acoustics, natural light and connection to the outdoors
- a school for the whole-person

Choice

allow for teacher and student autonomy while balancing standards with latitude for individual pathways to success



LEARNING

Create a middle school learning environment that addresses the unique **social and emotional needs of the early adolescent**. This pedagogical priority translates into a facility that:

- Supports the efficacy of the educational team,
- Supports the fidelity of teaming,
- Embodies joy in learning,
- Fosters a pervasive spirit of inclusion,
- Offers opportunity for active engagement as well as opportunity for innovation, reflection and repose
- Places a social, collaborative, reflective media center at the heart of the school

CONTEXT

Create a building and a landscape that enhances the existing character of the community and is **strongly connected to the natural landscape**.

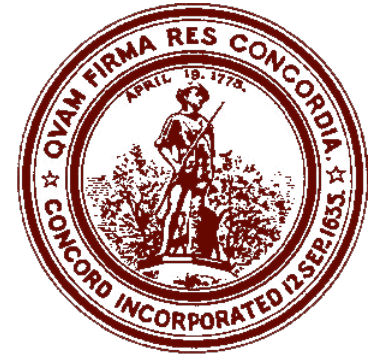
HISTORY

Create a building and a landscape that enhances town vitality and is **strongly connected to the history of Concord**.

ENVIRONMENT

Create a building and a landscape that **utilizes resources wisely** – one that balances energy use and consumption with optimized comfort, learning, and wellness.

Project Goals Recap



Total Project Cost maximum currently estimated **\$102 M**



Replace two middle schools with **one combined middle school**, grades 6-8



Design enrollment **700 Students**



Team Teaching Model, meet **Ed Plan**



Design for **Net Zero Energy**

Primary Goal:
Consolidate two middle school populations **into a single, 21st century learning facility** that will serve the community for generations.



