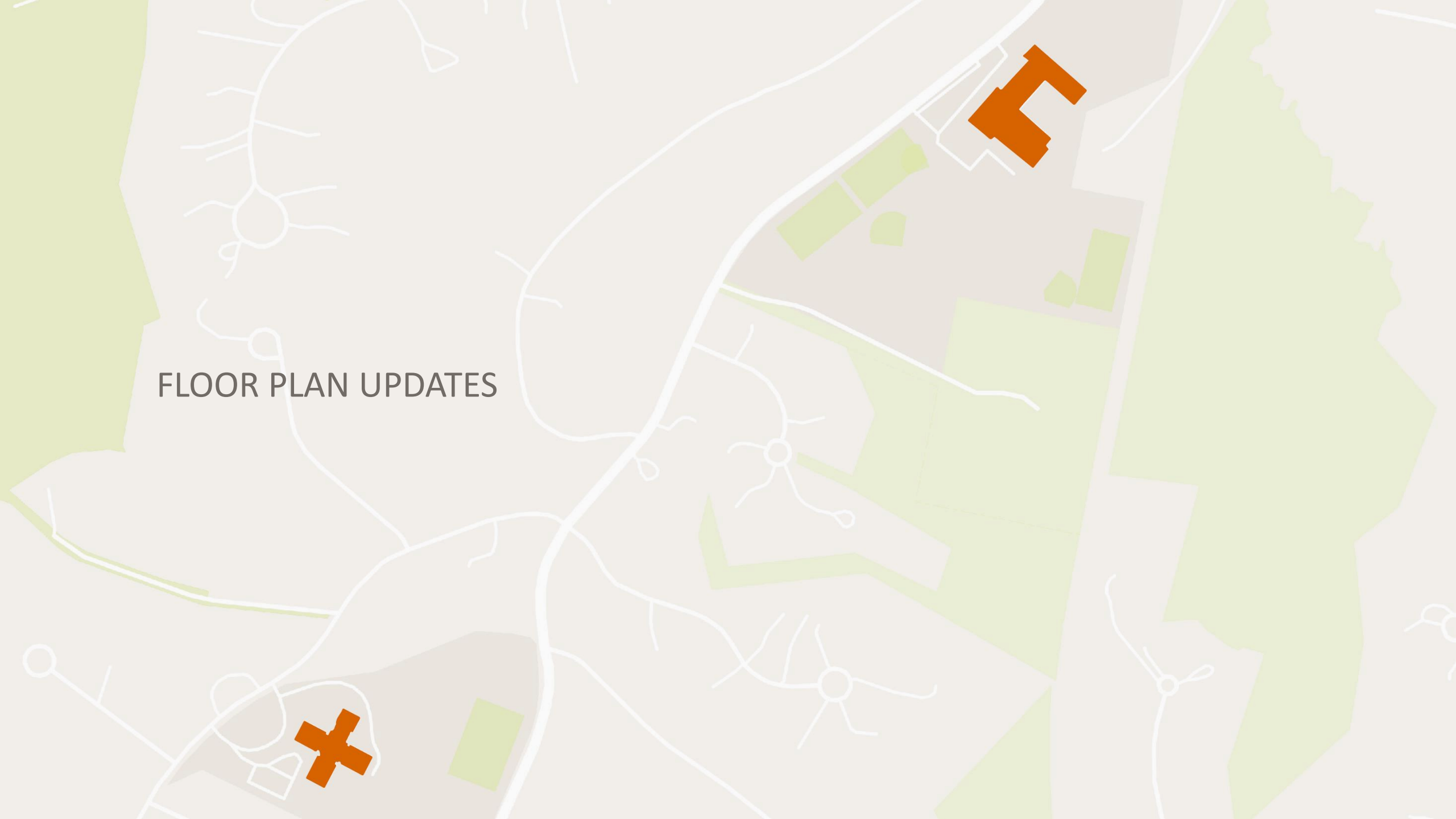


DESIGN SUB COMMITTEE
9.14.2021



FLOOR PLAN UPDATES

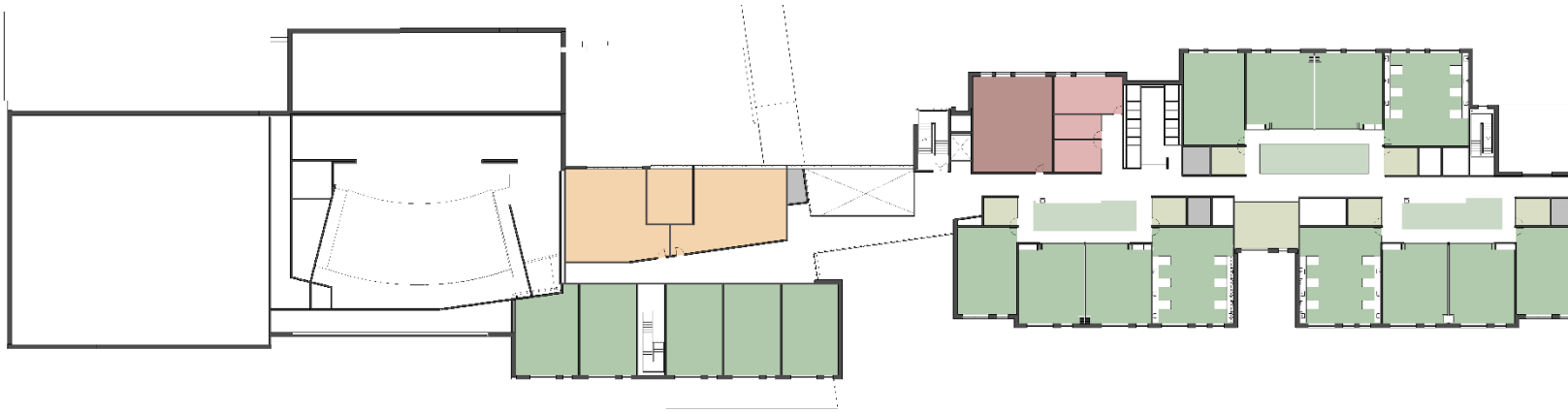




- Classroom
- Team Commons
- Special Education
- Vocation/Tech Classroom
- Administration
- Guidance
- Nurse
- Media Center
- Auditorium
- Music
- Art
- Physical Education
- Cafeteria



GROUND FLOOR PLAN



- Classroom
- Team Commons
- Special Education
- Vocation/Tech Classroom
- Administration
- Guidance
- Nurse
- Media Center
- Auditorium
- Music
- Art
- Physical Education
- Cafeteria

UPPER-LEVEL PLAN



LOWER-LEVEL PLAN

BUILDING SKIN









COLOR OPTION B RED

14 SEPTEMBER 2021

CONCORD MIDDLE SCHOOL



COLOR OPTION B RED





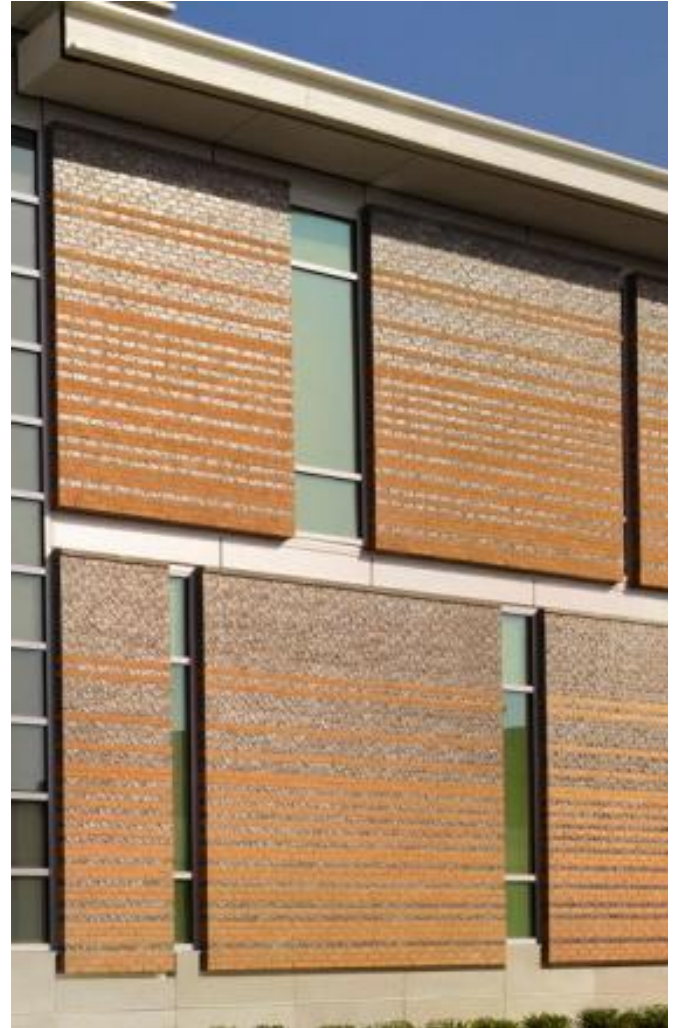
COLOR OPTION C GRAY

14 SEPTEMBER 2021

CONCORD MIDDLE SCHOOL

A stylized map with a light beige background. It features several green areas of varying shapes and sizes, representing parks or open spaces. White lines of varying thickness represent roads and paths. Some of these lines have small circles at their ends, resembling tree symbols. In the upper right quadrant, there is a large orange 'F' shape. In the lower left quadrant, there is a large orange 'X' shape. The text 'PREVIOUSLY PRESENTED' is located in the middle left area of the map.

PREVIOUSLY PRESENTED



OPTION 3 – GRAIN LAYERED BRICK COLORS



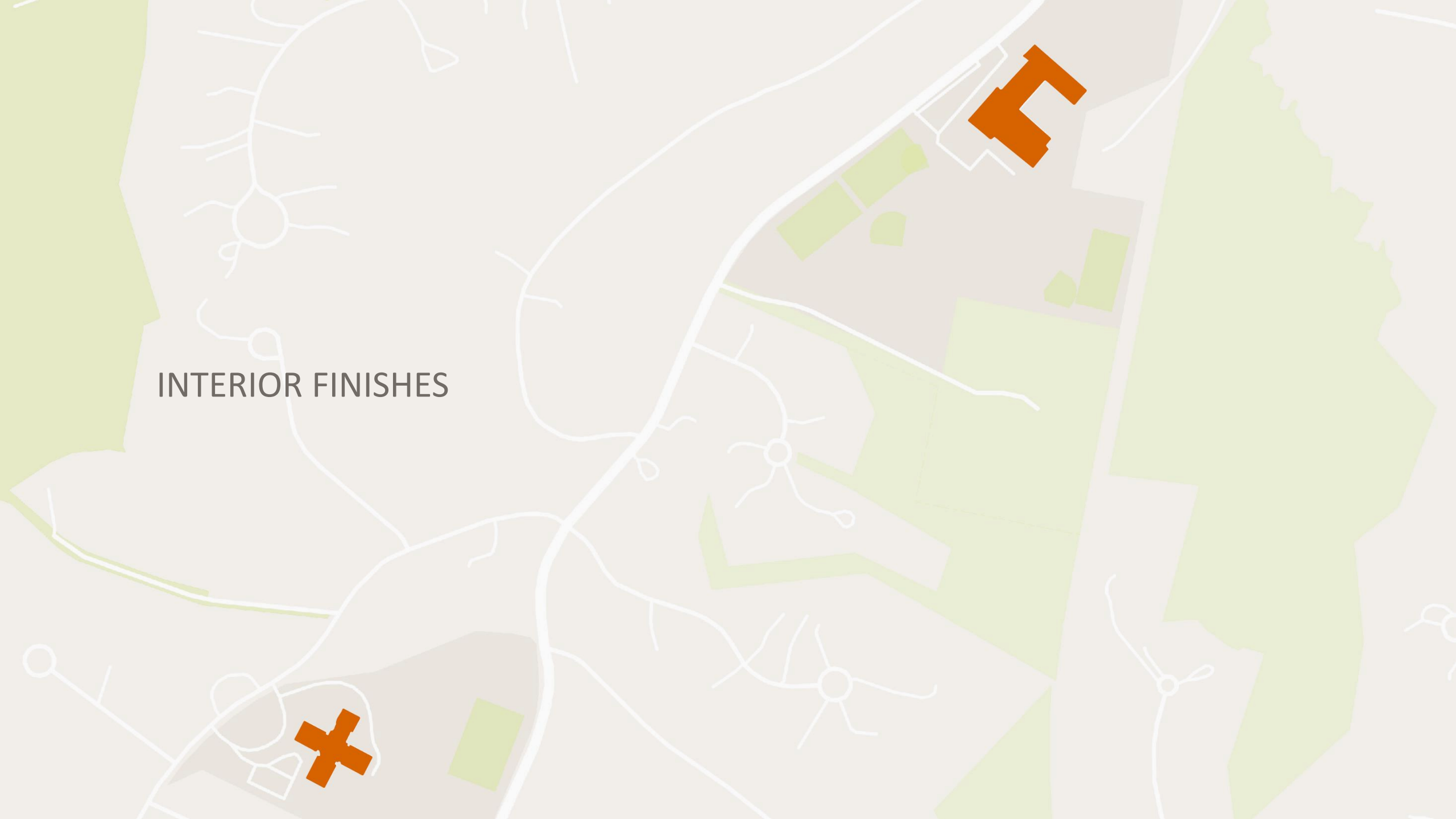








INTERIOR FINISHES





Interior materials will be selected conscious of the projects budget, sustainability and long-term building maintenance goals.

The interior design will relate to the exterior design and palette. Glazing on the exterior will create a visual and physical connection to the interior.

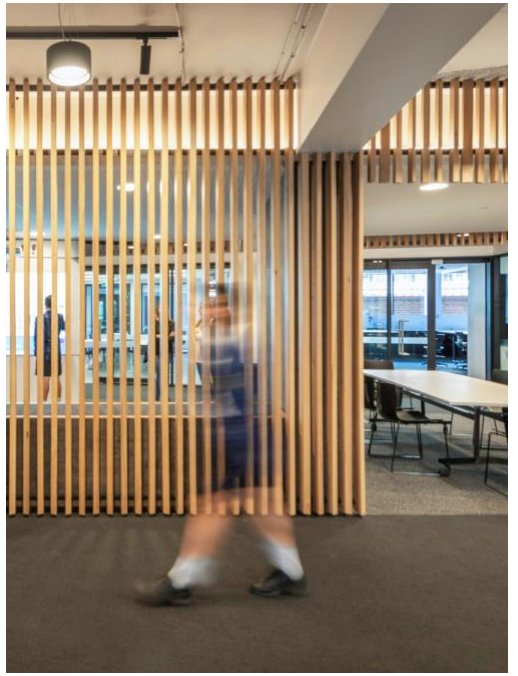
The building has been designed to encourage student engagement within academic clusters and common areas. Patterns, colors and materials will provide wayfinding and encourage movement throughout the space.

The interior design will be a neutral palette with complementary accent colors.





- Enhanced Indoor Air Quality
- Materials
 - Sourcing of Raw Materials
 - Recycled Content
 - EPD's & HPD's
 - Low Emitting Materials
- Interior Lighting
 - Artificial Lighting
 - Daylighting
- Acoustic Performance



TEAM COMMONS

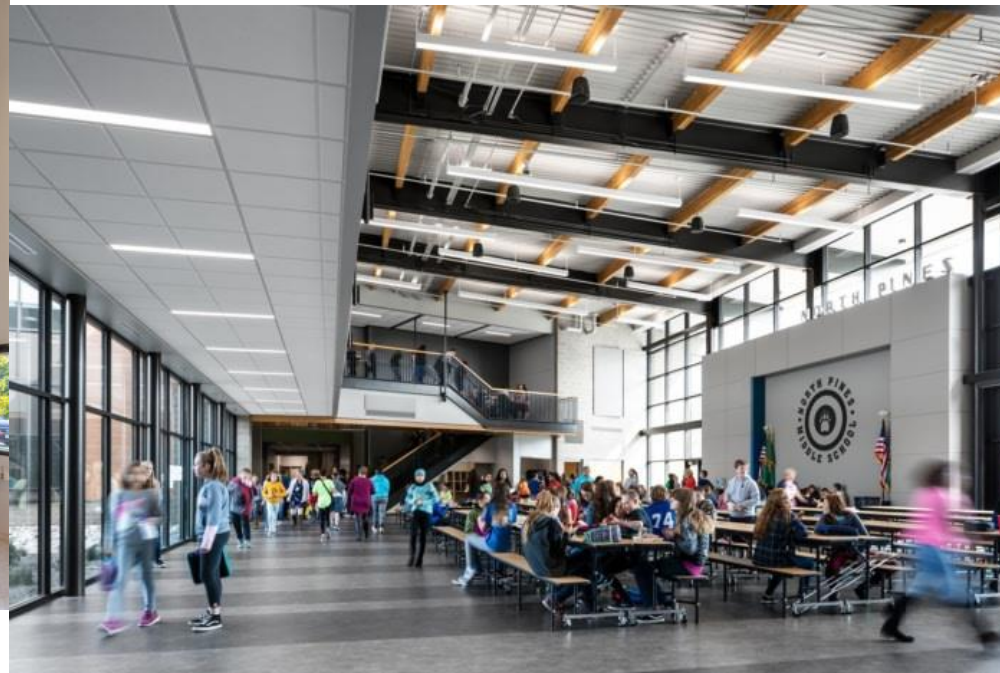


TYPICAL CLASSROOMS

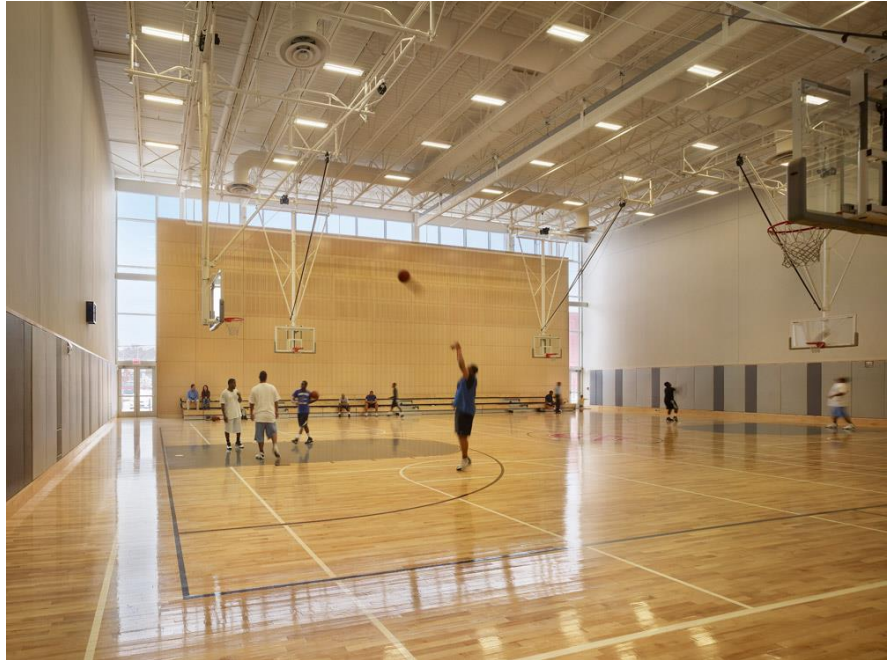


MAIN LOBBY





CAFETERIA





AUDITORIUM

14 SEPTEMBER 2021

CONCORD MIDDLE SCHOOL





RESTROOMS

Technical Performance

- Optimize Daylighting
- Maintain High Energy Efficiency
- Durability and Maintenance
- Recycled Content
- Acoustic Performance
- Low Emitting Materials

Cost Effectiveness

- Design for Repetition and Ease of Construction
- Prioritize Material Cost

Aesthetics

- Design for 21st Century Learning
- Express Educational Vision and Aspiration
- Timeless and Age Appropriate

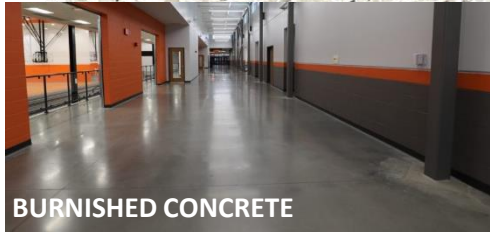
FLOORING

FLOORING

WALLS

CEILING

ACT/ WOOD LOOK METAL /
EXPOSED STEEL DECK

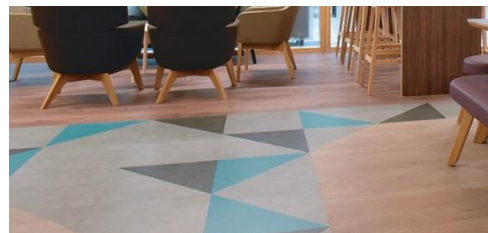


BURNISHED CONCRETE

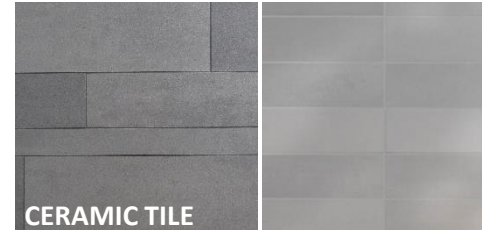
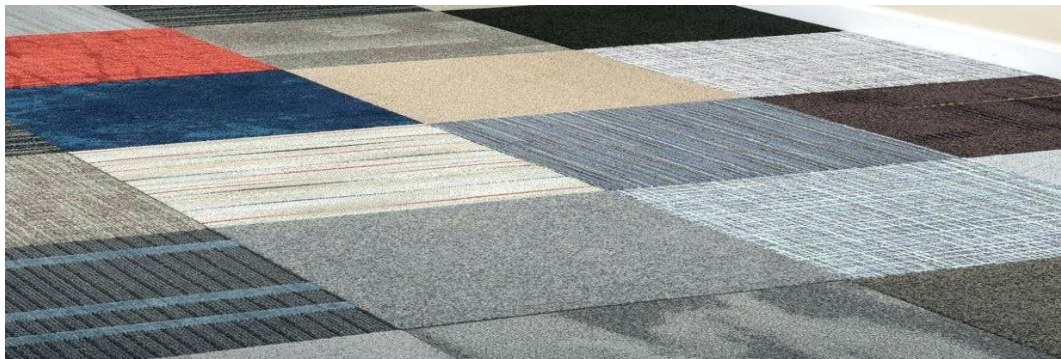
RUBBER FLOORING/ LINOLEUM



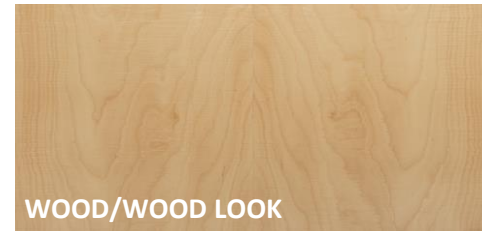
PORCELAIN TILE



CARPET TILE



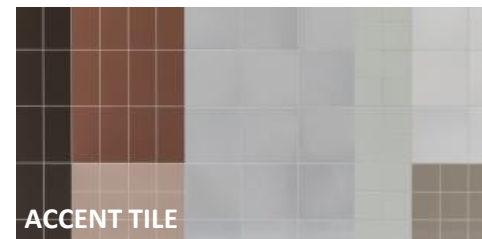
CERAMIC TILE



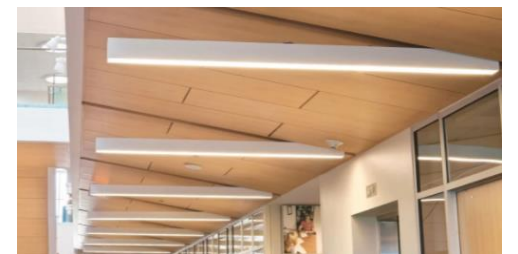
WOOD/WOOD LOOK



ACOUSTIC PANEL



ACCENT TILE



INTERIOR MATERIAL OPTIONS

WINDOWS



COUNTERS

SOLID SURFACE/
EPOXY / LAMINATE



CASEWORK/MILLWORK

LAMINATE / WOOD



BACK OF HOUSE

CMU / WALK OFF MAT



	Burnished Concrete	Ceramic Tile	Carpet Tile	VCT	LVT	Rubber	Linoleum
Sizes / Format	Slab	Tile	Tile	Sheet or tile	Plank	Sheet or tile	Sheet or tile
Description	Structural slab with finish coating;	Ceramic tile, mortar;	carpet tile;	Vinyl composite tile; site applied top coat;	Luxury vinyl tile; factory-applied UV cured finish;	Natural rubber, no additional coating;	Linoleum tile; wax polish;
Reference Manufacturer				Armstrong, Shaw	Armstrong, Shaw	Nora Sentico	Forbo, Armstrong
Cost/sf							
FACTOR 1: PROGRAM CAPABILITY	Circulation	Toilet Rooms, Lockers	Media Center, Admin Office, Sensitive Sound	Corridor, Classrooms, Labs, Team Commons	Corridor, Classrooms, Labs, Team Commons	Corridor, Classrooms, Labs, Team Commons	Corridor, Classrooms, Labs, Team Commons
FACTOR 2: ENVIRONMENTAL IMPACT <i>Based on results of Life Cycle Assessment (LCA), draws from multiple impact categories</i>	Very good Makes use of structural material, relies on finishing technique	Poor High carbon footprint due to energy intensive manufacturing	Poor High environmental impacts due to frequent replacement and energy intensive manufacturing	Very poor Much of impacts connected to coatings, stripper and polish	Poor High levels of vinyl and urethane	Good Made from recycled materials, No Red List Chemicals	Very good Bio-based material, low environmental impact in all categories
FACTOR 3: RED LIST CHEMICALS / TOXICITY <i>Includes chemicals of concern & known carcinogens prohibited by project guidelines</i>	Good No Red List Chemicals, VOC free coatings available	Good No Red List Chemicals, VOC free	Good No Red List Chemicals, VOC free, Some concern for air quality/allergens from dust accumulation	Poor Contains phthalates, a Red List Chemical; coatings may pose VOC concerns	Poor Contains high levels of phthalates, a Red List Chemical; coatings may pose VOC concerns	Good No Red List Chemicals, VOC free	Good No Red List Chemicals, VOC free
FACTOR 4: DURABILITY <i>Approximate life span based on manufacturer warrantee and Environmental Product Declaration (EPD)</i>	Very good Full life of building, structural element	Very good 30 year life span; Difficult to replace broken tile	Poor 10 year life span; Damaged tiles can be easily replaced	Poor 15-20 year life span; Damaged tiles can be easily replaced	Good 20 year life span; More durable than VCT, resistant to divots; Damaged planks can be easily replaced	Very good 30 year life span; Damaged tiles can be easily replaced; Indentations occur, but rebound	Very good 30 year life span; Damaged tiles can be easily replaced; Indentations occur, but rebound
FACTOR 5: MAINTENANCE <i>Required and recommended maintenance practices</i>	Low None	Low No refinished required; potential discoloration of grout over time.	Medium Requires vacuuming and Regular deep cleaning in high traffic areas.	High Regular stripping, buffing and recoating (urethane) 1-2 x/year; Required for durability.	Medium Does not require stripping and recoating, buffing and polish; Recommended for aesthetics.	Low No recoating required	Medium Periodic recoating (wet mop/wax, no stripping); Recommended for aesthetics/shine.
FACTOR 6: LIFE CYCLE COST <i>Tracked across 60 years cost/sq ft* material replacement (approx. maintenance cost, if relevant)</i>	\$ tbd	\$ tbd	\$ tbd	\$ tbd (\$tbd/SqFt /yr maintenance)	\$ tbd (\$tbd/SqFt /yr maintenance)	\$ tbd	\$ tbd (\$tbd/SqFt /yr maintenance)

Diagram of Floor Materials

- Linoleum
- Porcelain Tile or Epoxy Resinous
- Wood
- Sealed Concrete
- Carpet Tile
- Walk Off Carpet

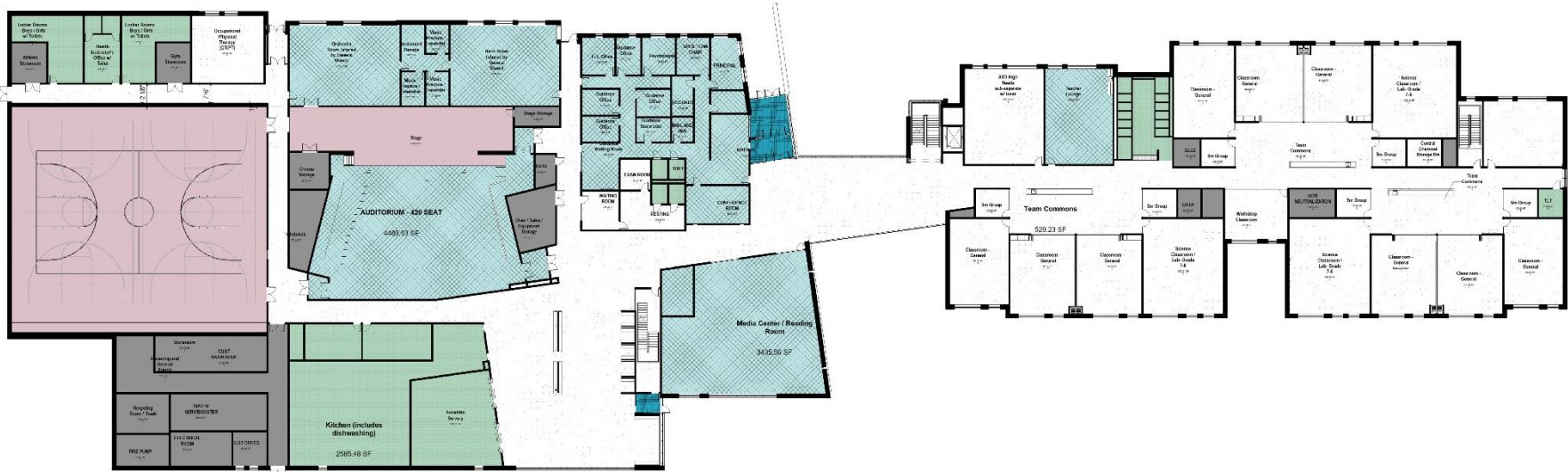



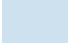



Diagram of Ceiling Materials

-  Acoustic Ceiling Tile
-  Food Service Ceiling Tile
-  Wood Look Metal Ceiling
-  Exposed Metal Deck
-  Painted Gypsum Ceiling

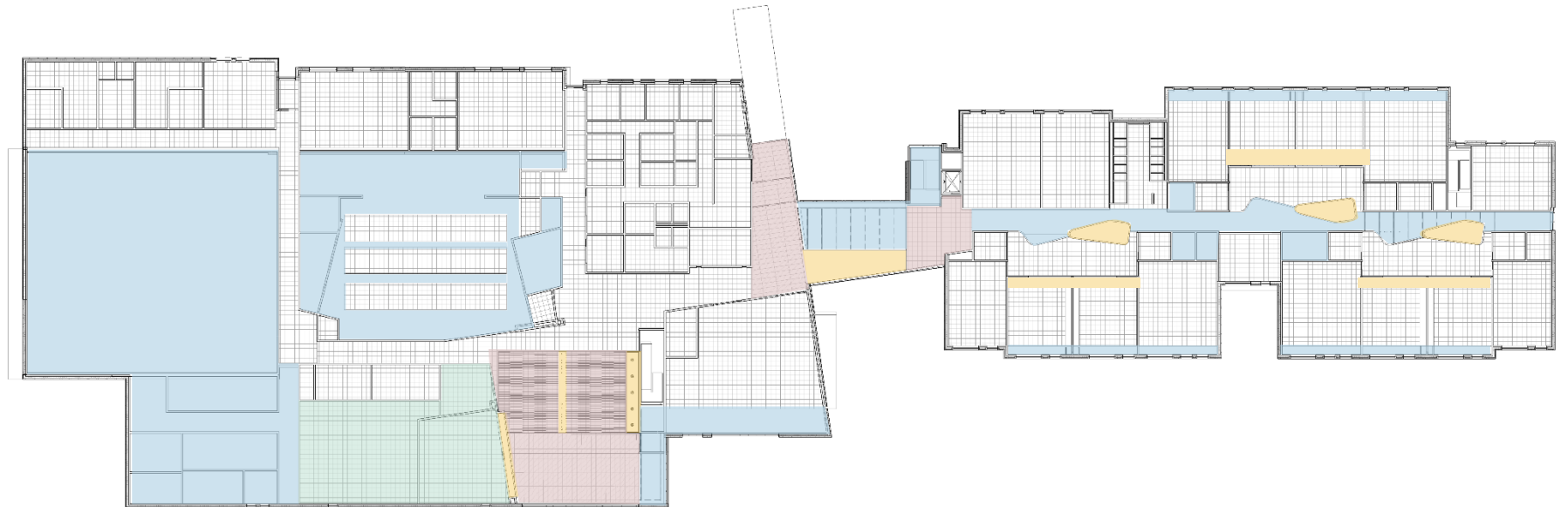


Diagram of Wall Materials

- Ceramic Tile Wainscot in Corridors
- Wall Graphic
- Full Height Accent Tile
- Millwork Bench
- Acoustic Wall Treatment
- Acoustic Panel

