



Town of Concord

Concord Middle School Project

Community Forum

06.07.21

EWING
COLE | SMMA

Project Goals Recap



Total Project Cost Range **\$80-\$103 M**



Replace two middle schools with **one combined middle school**, grades 6-8



Design enrollment **700 Students**



Team Teaching Model, meet **Ed Plan**



Design for **Net Zero Energy**

Primary Goal:
Consolidate two middle school populations **into a single, 21st century learning facility** that will serve the community for generations.

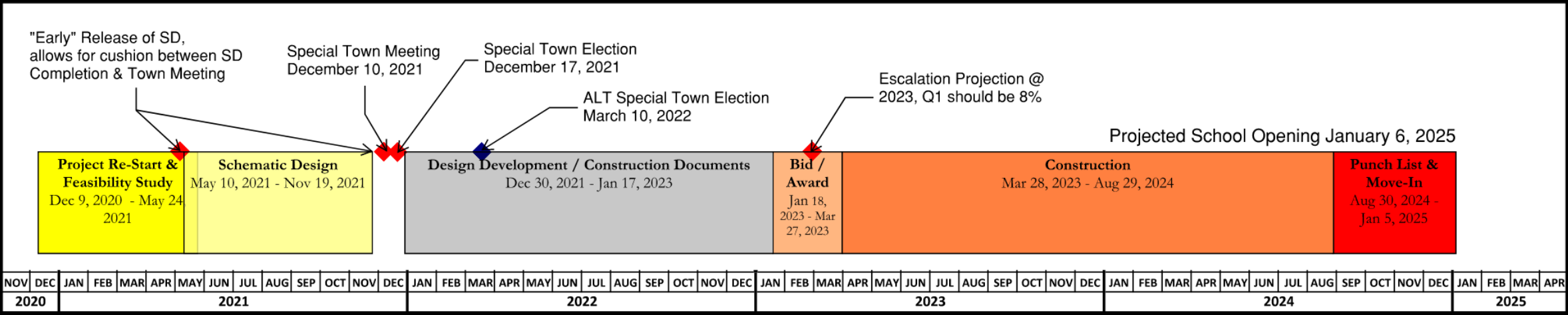
Feasibility Study Final Motion

CMSBC Vote on May 6, 2021

Matt Johnson moves that the CMSBC revise its space summary recommendation to move to schematic design which includes

- removing the dedicated square footage for the maker space and alternate PE space,*
- revise the size of the gym to accommodate two 74' practice cross courts within the width required by the single MIAA main court,*
- revise the auditorium size to 420 seats and*
- review the building design to seek opportunities to simplify and lower total project costs.*

Project Schedule

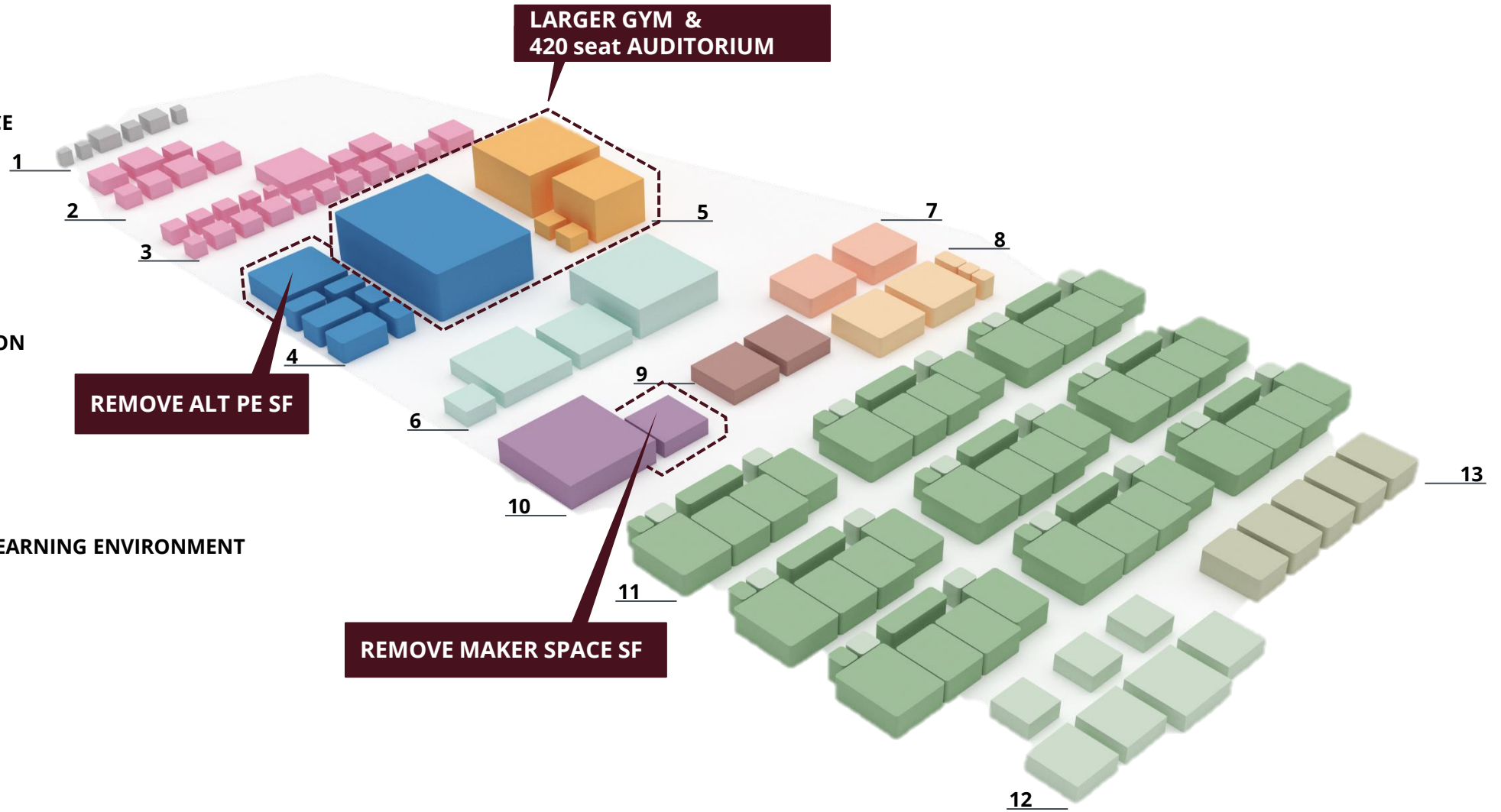


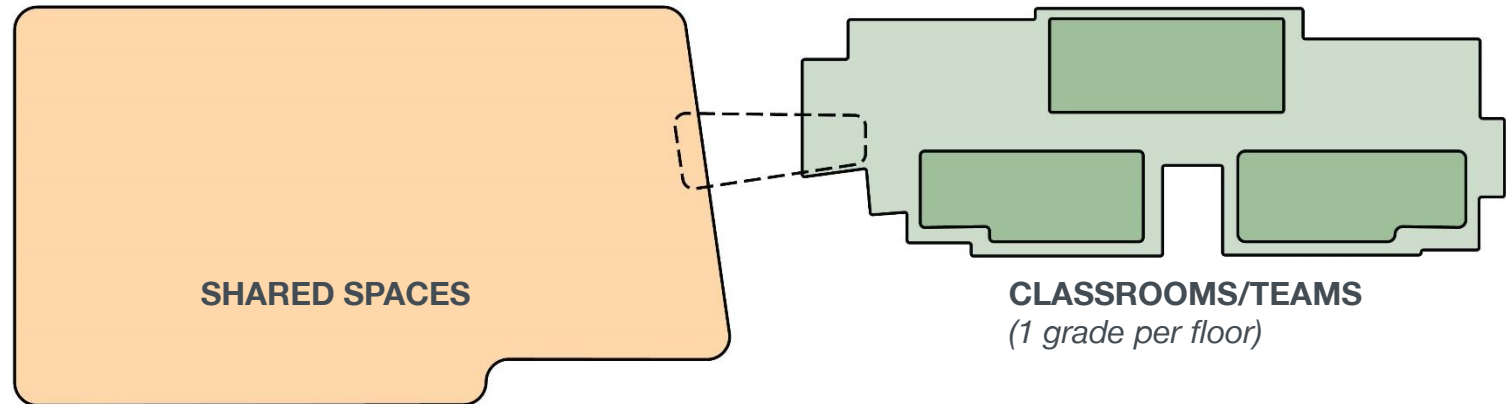
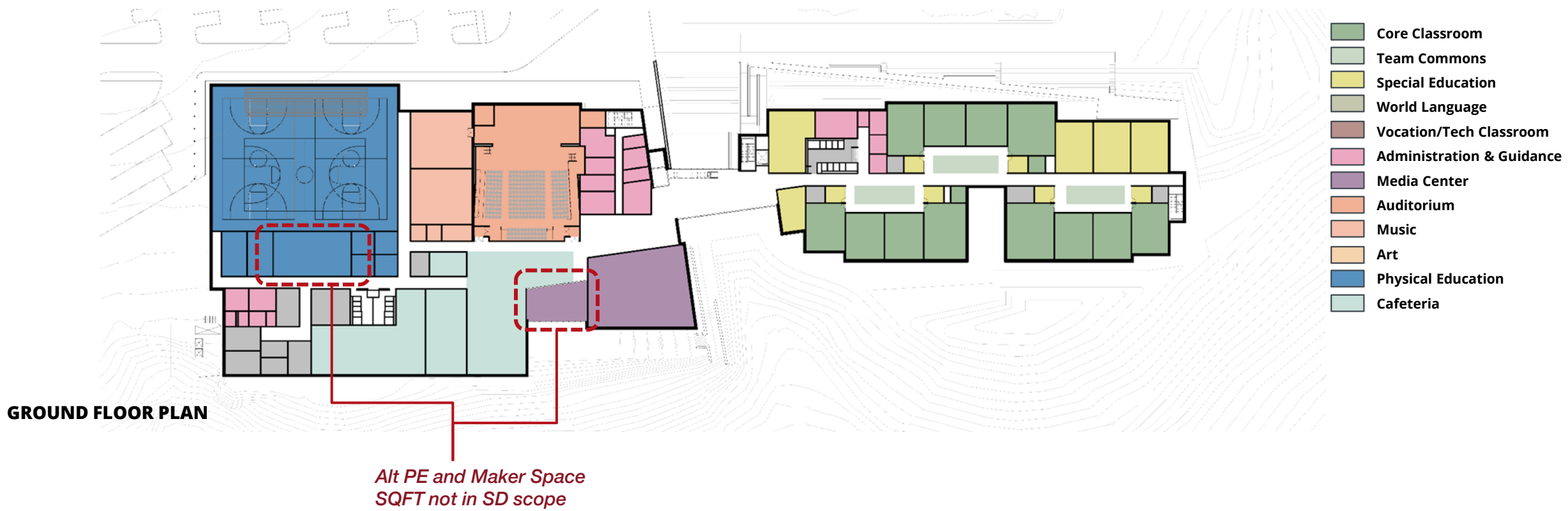
LEGEND

1. CUSTODIAL & LOADING
2. NURSE
3. ADMINISTRATION & GUIDANCE
4. HEALTH & PE
5. AUDITORIUM
6. DINING
7. ART
8. MUSIC
9. VOCATIONAL & TECHNICAL
10. MEDIA & RESOURCE
11. CORE TEAM
12. DEDICATED SPECIAL EDUCATION
13. WORLD LANGUAGE

SUMMARY OF SPACES

- 97,306 NET SQUARE FEET
- 145,959 GROSS SQUARE FEET
- 21ST CENTURY MIDDLE SCHOOL LEARNING ENVIRONMENT
- ACHIEVES ED PLAN GOALS





ORGANIZATIONAL DIAGRAM



ILLUSTRATIVE SITE PLAN

SD Phase Decisions

Building Design

- Programmatic Adjacencies
- Entries and Exits
- Expansion potential and locations

Site Plan Design

- Parking count
- Driveways and circulation
- Fields and Program

Exterior and Interior Design

- Exterior material selections in general
- Interior material selections in general

MEP Systems design concepts & Sustainability Options

- Refine preferred system types
- Extent of Air Conditioning
- Sustainability options
 - i. Rainwater harvesting
 - ii. Solar panels
 - iii. EV Charging Stations
 - iv. Other

Safety and Security design

- Passive and active safety and security measures



Q&A

Concord Middle School